

PRESSURE REGULATORS

SERIES MC

Ports G1/4, G3/8 and G1/2
Modular



- Minimal pressure decreases
- Lockable knob with closure
- Integral return exhaust (relieving)
- Versions available:
 - Manifold
 - with by-pass valve

Series MC pressure regulators are available with ports G1/4, G3/8 and G1/2.
Versions with secondary pressure relieving are usually available and all regulators can be panel mounted.

General Data

Construction	Modular, compact, diaphragm type
Materials	Zama, brass, nbr, technopolymer
Ports	G1/4, G3/8, G1/2
Weight	0,323 kg, 0,644 kg, 0,624 kg
Mounting	In-line, wall or panel mounting (in any position)
Operating temperature	-5°C ÷ 50°C (with the dew point of the fluid lower than 2°C at the min. working temperature)
Finishing	Enamelled
Inlet pressure	0 ÷ 16 bar
Outlet pressure	0.5 ÷ 10 bar (standard) or 0.5 ÷ 2 bar; 0.5 ÷ 4 bar and 0.5 ÷ 7 bar
Nominal flow	See flow diagrams on the following pages
Secondary pressure (relieving)	With relieving (standard) without relieving
Fluid	Compressed air

PRESSURE REGULATORS
SERIES MC - CODING EXAMPLES

Coding Example

MC	2	02	-	R	T	0	2	-	VS
MC	SERIES								
2	SIZE 1 = G1/4 2 = G3/8 - G1/2								
02	PORTS 04 = G1/4 38 = G3/8 02 = G1/2								
R	REGULATOR								
T	WORKING PRESSURE 0 = 0,5 ÷ 10 bar (standard) 1 = 0,5 ÷ 4 bar 2 = 0,5 ÷ 2 bar (only G1/4) 7 = 0,5 ÷ 7 bar (only G1/4) T = Calibrated * B = Locked *								
0	CONSTRUCTION 0 = Self-relieving (standard) 1 = Non-relieving 5 = Precise relieving								
2	PRESSURE GAUGE ** = Without pressure gauge (standard) 1 = With pressure gauge 0-2,5, with working pressure 0,5 ÷ 2 bar 2 = With pressure gauge 0-6, with working pressure 0,5 ÷ 4 bar 3 = With pressure gauge 0-10, with working pressure 0,5 ÷ 7 bar 4 = With pressure gauge 0-12, with working pressure 0,5 ÷ 10 bar								
VS	FLOW DIRECTION = Without by-pass valve (standard) VS = With by-pass valve (only G1/4)								

** If the regulator is calibrated or locked, after the ports add the inlet pressure "■" and the outlet pressure "●"

INLET PRESSURE:

■ = enter the SUPPLY pressure value

OUTLET PRESSURE:

● = enter the OUTLET pressure value for the LOCKED regulator or the maximum value of the ADJUSTABLE pressure for the CALIBRATED regulator

Example of a calibrated regulator with Inlet Pressure = 6,3 bar and Outlet Pressure = 4,5 bar
Complete part number: MC104-MT03-6,3-4,5

** The pressure gauges are supplied disassembly
for size 1 pressure gauge mod. M043-P..
for size 2 pressure gauge mod. M053-P..

Pneumatic symbols

- PR03 = Regulator with relieving and by-pass valve
PR04 = Regulator without relieving and with by-pass valve
PR05 = Regulator without relieving and with pressure gauge
PR06 = Regulator with relieving and pressure gauge
PR07 = Regulator with relieving, by-pass valve and pressure gauge
PR08 = Regulator without relieving with by-pass valve and pressure gauge

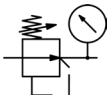
PR03



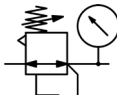
PR04



PR05



PR06



PR07



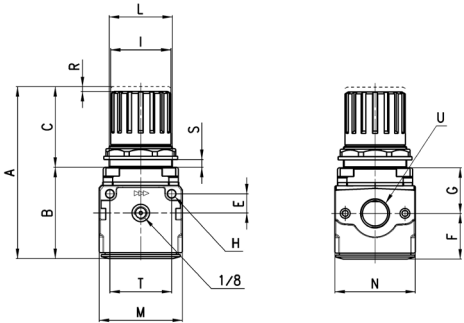
PR08



Pressure regulators Series MC

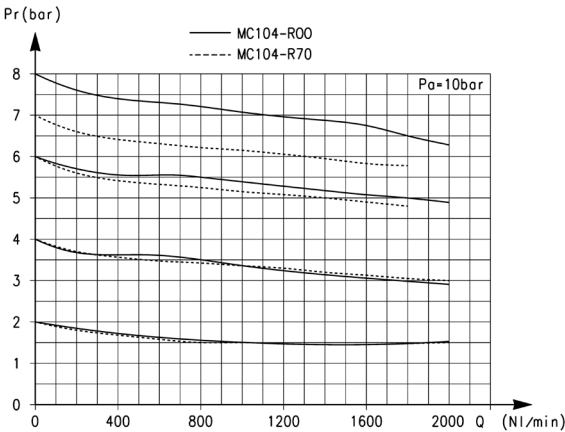


Mod.	A	B	C	E	F	G	H	I	L	M	N	R	S	T	U
MC104-R00	94	56	38	11	28,5	27,5	4,5	28	30x1,5	45	45	3	0 ÷ 6	35	G1/4
MC238-R00	127	67	60	14	34	35	5,5	45	47x1,5	62	60	3,5	0 ÷ 9	46	G3/8
MC202-R00	127	67	60	14	34	35	5,5	45	47x1,5	62	60	3,5	0 ÷ 9	46	G1/2



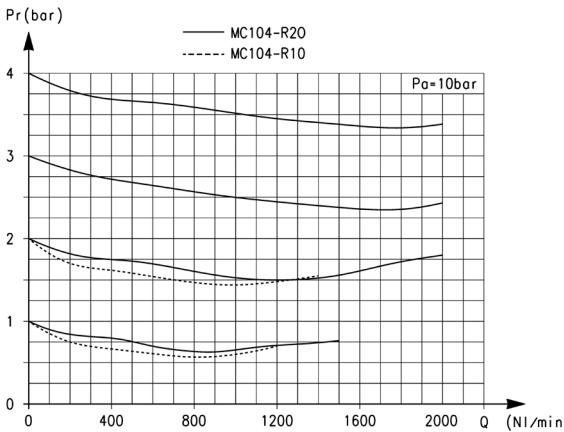
Flow diagrams

Flow diagrams for models: MC104-R00 and MC104-R70



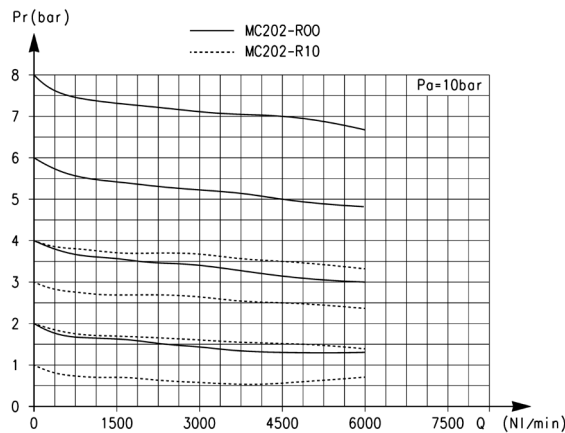
Pa = Inlet pressure (bar)
Pr = Regulated pressure (bar)
Q = Flow (NI/min)

Flow diagrams for models: MC104-R10 and MC104-R20



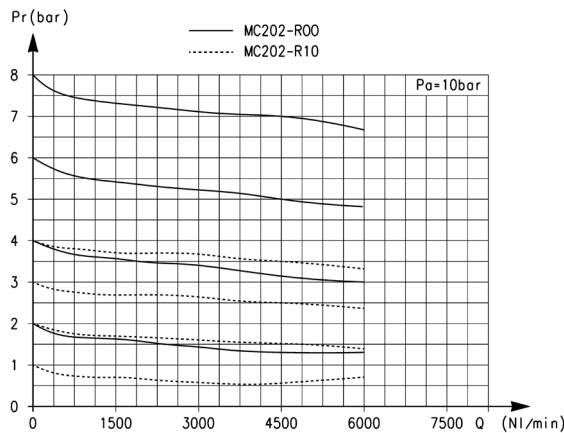
Pa = Inlet pressure (bar)
Pr = Regulated pressure (bar)
Q = Flow (NI/min)

Flow diagrams for models: MC202-R00 and MC202-R10



Pa = Inlet pressure (bar)
Pr = Regulated pressure (bar)
Q = Flow (NI/min)

Flow diagrams for models: MC202-R00 and MC202-R10



Pa = Inlet pressure (bar)
Pr = Regulated pressure (bar)
Q = Flow (NI/min)

PRESSURE REGULATORS
SERIES MC - ACCESSORIES

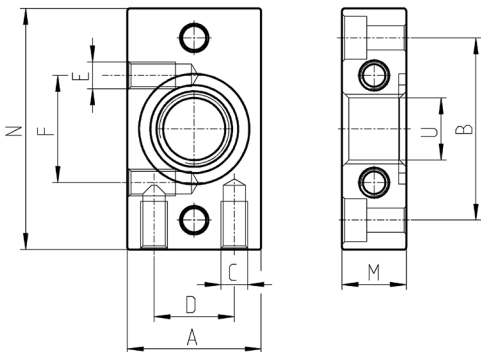
Terminal flanges (Kit A)



Materials:
painted aluminium flanges,
zinc-plated steel screws and
NBR O-ring.

The kit MC104-FL is supplied
with:
1x left flange,
1x right flange;
4x screws M4x14;
2x O-Ring 2068.

Each of the kits MC202-FL
and MC238-FL is supplied
with:
1x left flange,
1x right flange;
4x screws M5x14;
2x O-Ring 3100.



Mod.	A	B	C	D	E	F	N	M	U	Size
MC104-FL	25	34	M5	15	M5	20	45	12	G1/4	1
MC238-FL	35	44,5	M5	20	-	-	60	14	G3/8	2
MC202-FL	35	44,5	M5	20	-	-	60	14	G1/2	2

AIR TREATMENT

9

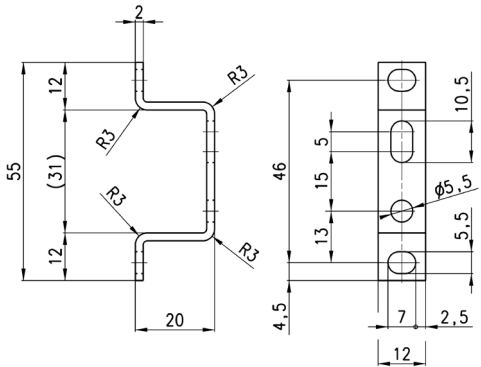
Mounting bracket for (Kit B)



Mounting bracket for
terminals 1/4, 3/8, 1/2.

Materials:
zinc-plated steel brackets
and screws.

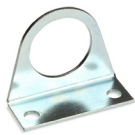
The kit MC104-ST is supplied
with:
2x terminal brackets
4x screws M5x10.



Mod.
MC104-ST

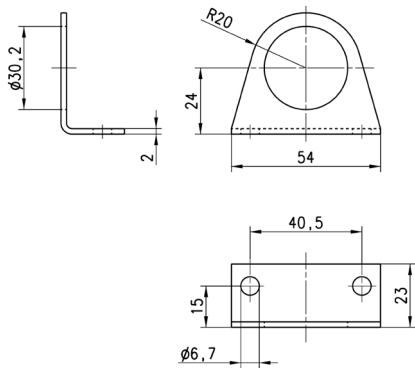
Mounting bracket Mod. C114ST

For regulators and filter-regulators MC1



Material:
zinc-plated steel

Supplied with:
1x bracket



Mod.
C114-ST

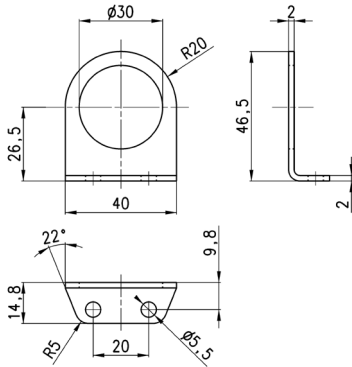
Mounting bracket Mod. 114-ST/1

For regulators and filter-regulators MC1



Material:
zinc-plated steel

Supplied with:
1x bracket



Mod.
C114-ST/1

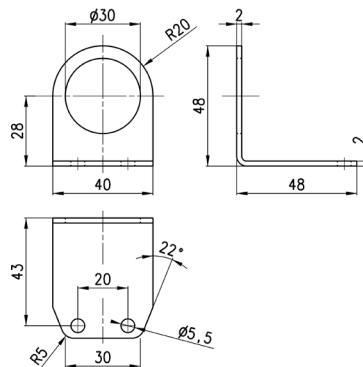
Mounting bracket C114-ST/2

For regulators and filter-regulators MC1



Material:
zinc-plated steel

Supplied with:
1x bracket



Mod.

C114-ST/2

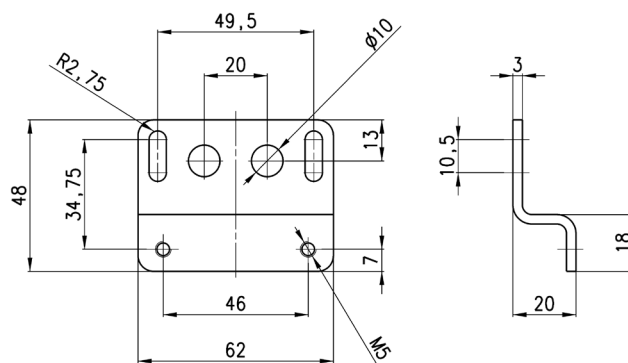
Mounting bracket Mod. C238-ST/1

For MC2



Materials:
zinc-plated steel bracket
and screws.

Supplied with:
1x bracket
2x screws M5X65.



Mod.

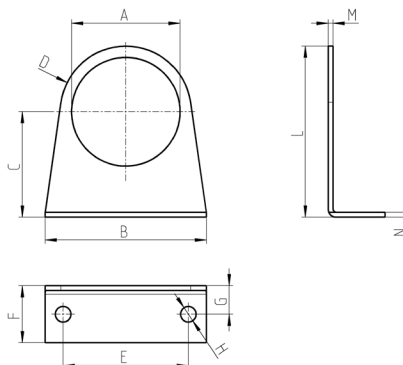
C238-ST/1

Fixing bracket for regulators

For regulators MC2



Supplied with:
1x zinc-plated steel bracket



Mod.	A	B	C	D	E	F	G	H	L	M	N
MX2-S	Ø47,2	73	60,5	R29,5	54	25	15	Ø6,2	90	2,5	2,5