



E5CC-RX3A5M-000

Temperature controller, 1/16 DIN (48x48 mm), 1 Relay output, 3 AUX, 100-240 VAC

Dane techniczne

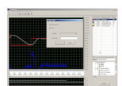
| | |
|--------------------------|--|
| Size | 1/16 DIN (48 x 48 mm) |
| Functions | ON/OFF control, PID control |
| Number of control loops | 1 |
| Temperature input type | B, C (WRe5-26), E, J, JPt100, K, L, N, P (PLII), Pt100, R, S, T, U |
| Linear analog input type | 0 to 10 V, 0 to 20 mA, 0 to 5 V, 1 to 5 V, 4 to 20 mA |
| Temperature range | -200-2300 °C |
| Number of event inputs | 0 |
| Number of alarm outputs | 3 |
| Supply voltage AC | 100-240 V |
| Control output | Relay |
| Terminal | Screw |

Akcesoria



E58-CIFQ2

E5CB & E5CC and E5EC* accessory, quick link programming cable, allows direct USB connection without requirement for communications card or power supply. Also the display will be powered (CX-Thermo v4.4 is needed). *For E5EC front connection.



EST2-2C-MV4

CX-Thermo, direct 1 to 1 connecting software (1 to several if same TC type), for programming and monitoring E5_N (version 5 & 6), E5ZN and CelciuX (EJ1)

Biblioteka rysunków

CAD



Digital Temperature Controllers

Broszura

EN PDF 4,45 MB



E5CC

Karta katalogowa

EN PDF 223 KB



E5CC

Pierwsze kroki

EN PDF 5,23 MB



E5CC/E5EC

Pierwsze kroki

PL PDF 4,32 MB



E5CN-E5CC Conversion File

Oprogramowanie

EN ZIP 613 KB



E5EC

Karta katalogowa

EN PDF 370 KB



E5_C

Instrukcja komunikacji

EN PDF 7 MB



E5_C - Digital Temperature Controllers

Podręcznik użytkownika

EN PDF 14,4 MB



E5_C/E5_C-T Digital Temperature Controller

Karta katalogowa

EN PDF 40,8 MB



EAC Mark removal

Informacja o wycofaniu z oferty

EN PDF 221 KB



Panel Building

Broszura

EN PDF 3,11 MB



Thermac Temperature Simulation

Oprogramowanie

EN ZIP 16,2 MB



Thermac Temperature Simulation Tips and Tricks

Pierwsze kroki

EN PDF 381 KB