

Series 2000 brass pipe fittings

New Models

Fittings threads: metric (M5),
 BSP (G1/8, G1/4, G3/8, G1/2, G3/4, G1),
 BSPT (R1/8, R1/4, R3/8, R1/2, R3/4, R1)

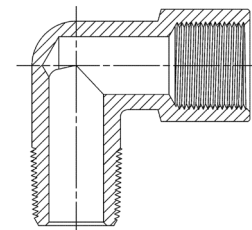


The wide range of Camozzi pipe fittings, which includes straight, L and Tee, Cross piece male or female couplings, guarantees the necessary support during the design of compressed air systems.

GENERAL DATA

| | |
|-------------------------|---|
| Threads | GAS conical ISO 7 (BSPT) GAS cylindrical ISO 228 (BSP) |
| Temperature | -40°C ÷ 120°C |
| Medium | compressed air or other low pressure fluids |
| Materials | nickel-plated brass |
| Working pressure | 80 bar |

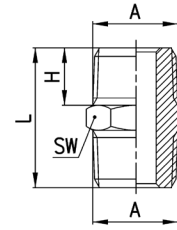
Pipe fittings



Fittings Mod. 2500



BSPT Nipple

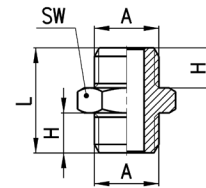


| DIMENSIONS | | | | | |
|------------|------|------|------|----|------------|
| Mod. | A | H | L | SW | Weight (g) |
| 2500 1/8 | R1/8 | 7,5 | 19,5 | 12 | 9 |
| 2500 1/4 | R1/4 | 11 | 27 | 14 | 16 |
| 2500 3/8 | R3/8 | 11,5 | 28 | 17 | 21 |
| 2500 1/2 | R1/2 | 14 | 33,5 | 22 | 41 |
| 2500 3/4 | R3/4 | 16,5 | 40 | 27 | 80 |
| 2500 1 | R1 | 19 | 45,5 | 34 | 125 |

Fittings Mod. 2501



Metric-BSP Nipple

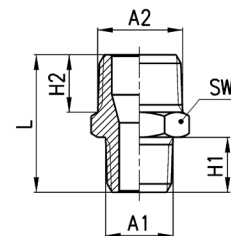


| DIMENSIONS | | | | | |
|------------|------|----|------|----|------------|
| Mod. | A | H | L | SW | Weight (g) |
| 2501 M5 | M5 | 4 | 11,5 | 8 | 2 |
| 2501 1/8 | G1/8 | 6 | 16,5 | 13 | 9 |
| 2501 1/4 | G1/4 | 8 | 21 | 17 | 15 |
| 2501 3/8 | G3/8 | 9 | 23 | 19 | 21 |
| 2501 1/2 | G1/2 | 10 | 25,5 | 24 | 35 |

Fittings Mod. 2510



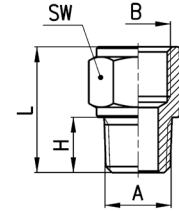
BSPT Reducing Nipple



| DIMENSIONS | | | | | | | |
|--------------|------|------|------|------|------|----|------------|
| Mod. | A1 | A2 | H2 | H1 | L | SW | Weight (g) |
| 2510 1/8-1/4 | R1/8 | R1/4 | 11 | 7,5 | 23,5 | 14 | 14 |
| 2510 1/8-3/8 | R1/8 | R3/8 | 11,5 | 7,5 | 24 | 17 | 18 |
| 2510 1/4-3/8 | R1/4 | R3/8 | 11,5 | 11 | 27,5 | 17 | 20 |
| 2510 1/4-1/2 | R1/4 | R1/2 | 14 | 11 | 30,5 | 22 | 34 |
| 2510 3/8-1/2 | R3/8 | R1/2 | 14 | 11,5 | 31 | 22 | 34 |
| 2510 1/2-3/4 | R1/2 | R3/4 | 16,5 | 14 | 37,5 | 27 | 67 |

Fittings Mod. 2520

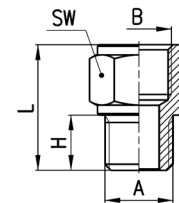
BSPT Male Reducing Extension



| DIMENSIONS | | | | | | |
|--------------|------|------|------|------|----|------------|
| Mod. | A | B | H | L | SW | Weight (g) |
| 2520 1/8-1/8 | R1/8 | G1/8 | 7,5 | 17,5 | 13 | 9 |
| 2520 1/8-1/4 | R1/8 | G1/4 | 7,5 | 19 | 17 | 15 |
| 2520 1/8-3/8 | R1/8 | G3/8 | 7,5 | 20 | 20 | 19 |
| 2520 1/4-1/4 | R1/4 | G1/4 | 11 | 22,5 | 17 | 17 |
| 2520 1/4-3/8 | R1/4 | G3/8 | 11 | 23,5 | 20 | 21 |
| 2520 1/4-1/2 | R1/4 | G1/2 | 11 | 27,5 | 24 | 35 |
| 2520 3/8-3/8 | R3/8 | G3/8 | 11,5 | 24 | 20 | 23 |
| 2520 3/8-1/2 | R3/8 | G1/2 | 11,5 | 28 | 24 | 37 |
| 2520 1/2-1/2 | R1/2 | G1/2 | 14 | 30,5 | 24 | 41 |

Fittings Mod. 2521

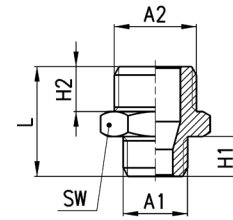
Metric-BSP Reducing Extension



| DIMENSIONS | | | | | | |
|--------------|------|------|----|------|----|------------|
| Mod. | A | B | H | L | SW | Weight (g) |
| 2521 M5-1/8 | M5 | G1/8 | 4 | 14 | 13 | 7 |
| 2521 1/8-1/8 | G1/8 | G1/8 | 6 | 16 | 13 | 8 |
| 2521 1/8-1/4 | G1/8 | G1/4 | 6 | 17,5 | 17 | 14 |
| 2521 1/8-3/8 | G1/8 | G3/8 | 6 | 18,5 | 20 | 30 |
| 2521 1/4-1/4 | G1/4 | G1/4 | 8 | 19,5 | 17 | 16 |
| 2521 1/4-3/8 | G1/4 | G3/8 | 8 | 20,5 | 20 | 20 |
| 2521 1/4-1/2 | G1/4 | G1/2 | 8 | 24,5 | 24 | 33 |
| 2521 3/8-3/8 | G3/8 | G3/8 | 9 | 21,5 | 20 | 22 |
| 2521 3/8-1/2 | G3/8 | G1/2 | 9 | 25,5 | 24 | 35 |
| 2521 1/2-1/2 | G1/2 | G1/2 | 10 | 26,5 | 24 | 36 |

Fittings Mod. 2511

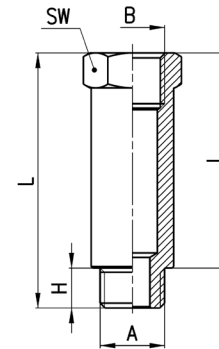
Metric-BSP Reducing Nipple



| DIMENSIONS | | | | | | | |
|--------------|------|------|----|----|------|----|------------|
| Mod. | A1 | A2 | H1 | H2 | L | SW | Weight (g) |
| 2511 M5-1/8 | M5 | G1/8 | 4 | 6 | 14,5 | 13 | 8 |
| 2511 1/8-1/4 | G1/8 | G1/4 | 6 | 8 | 19 | 17 | 15 |
| 2511 1/8-3/8 | G1/8 | G3/8 | 6 | 9 | 20 | 19 | 19 |
| 2511 1/4-3/8 | G1/4 | G3/8 | 8 | 9 | 22 | 19 | 20 |
| 2511 1/4-1/2 | G1/4 | G1/2 | 8 | 10 | 23,5 | 24 | 32 |
| 2511 3/8-1/2 | G3/8 | G1/2 | 9 | 10 | 24,5 | 24 | 34 |

Fittings Mod. 2525

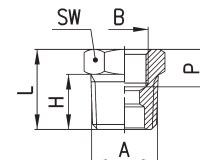
BSP Male Extension



| DIMENSIONS | | | | | | | |
|-------------|------|------|---|----|----|----|------------|
| Mod. | A | B | H | I | L | SW | Weight (g) |
| 2525 1/8-16 | G1/8 | G1/8 | 6 | 16 | 22 | 13 | 12 |
| 2525 1/8-36 | G1/8 | G1/8 | 6 | 36 | 42 | 13 | 24 |
| 2525 1/4-27 | G1/4 | G1/4 | 8 | 27 | 35 | 17 | 30 |
| 2525 1/4-43 | G1/4 | G1/4 | 8 | 43 | 51 | 17 | 45 |

Fittings Mod. 2530

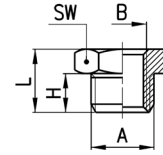
BSPT Reducing



| DIMENSIONS | | | | | | | |
|--------------|------|------|------|---------|------|----|------------|
| Mod. | A | B | H | P (min) | L | SW | Weight (g) |
| 2530 1/4-1/8 | R1/4 | G1/8 | 11 | 6 | 16 | 14 | 9 |
| 2530 3/8-1/8 | R3/8 | G1/8 | 11,5 | 8,5 | 16,5 | 17 | 17 |
| 2530 1/2-1/8 | R1/2 | G1/8 | 14 | 9,5 | 19,5 | 22 | 12 |
| 2530 3/8-1/4 | R3/8 | G1/4 | 11,5 | 7 | 16,5 | 17 | 34 |
| 2530 1/2-1/4 | R1/2 | G1/4 | 14 | 9,5 | 19,5 | 22 | 30 |
| 2530 1/2-3/8 | R1/2 | G3/8 | 14 | 8 | 19,5 | 22 | 24 |
| 2530 3/4-3/8 | R3/4 | G3/8 | 16,5 | 11,5 | 23 | 27 | 67 |
| 2530 3/4-1/2 | R3/4 | G1/2 | 16,5 | 9,5 | 23,5 | 27 | 48 |
| 2530 1-1/2 | R1 | G1/2 | 19 | 14 | 27 | 34 | 131 |

Fittings Mod. 2531

BSP Reducing

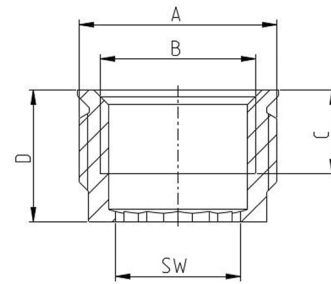


| DIMENSIONS | | | | | | |
|--------------|------|------|----|------|----|------------|
| Mod. | A | B | H | L | SW | Weight (g) |
| 2531 1/8-M5 | G1/8 | M5 | 6 | 10,5 | 13 | 8 * |
| 2531 1/4-1/8 | G1/4 | G1/8 | 8 | 13 | 17 | 11 * |
| 2531 3/8-1/8 | G3/8 | G1/8 | 9 | 14 | 19 | 17 |
| 2531 3/8-1/4 | G3/8 | G1/4 | 9 | 14 | 19 | 12 * |
| 2531 1/2-1/8 | G1/2 | G1/8 | 10 | 15,5 | 24 | 32 |
| 2531 1/2-1/4 | G1/2 | G1/4 | 10 | 15,5 | 24 | 29 |
| 2531 1/2-3/8 | G1/2 | G3/8 | 10 | 15,5 | 24 | 22 * |

* = with through-out thread

Fittings Mod. 2561

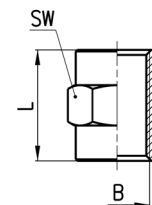
News



| Mod. | A | B | C | D | SW |
|--------------|------|------|------|----|----|
| 2561 1/4-1/8 | G1/4 | G1/8 | 7 | 9 | 6 |
| 2561 3/8-1/4 | G3/8 | G1/4 | 7 | 9 | 8 |
| 2561 1/2-3/8 | G1/2 | G3/8 | 9 | 11 | 10 |
| 2561 3/4-1/2 | G3/4 | G1/2 | 11 | 13 | 12 |
| 2561 1-3/4 | G1 | G3/4 | 12,5 | 15 | 17 |

Fittings Mod. 2543

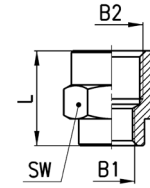
Sleeve



| DIMENSIONS | | | | |
|------------|------|----|----|------------|
| Mod. | B | L | SW | Weight (g) |
| 2543 M5 | M5 | 11 | 8 | 3 |
| 2543 1/8 | G1/8 | 15 | 13 | 8 |
| 2543 1/4 | G1/4 | 22 | 17 | 19 |
| 2543 3/8 | G3/8 | 23 | 20 | 19 |
| 2543 1/2 | G1/2 | 28 | 24 | 29 |

Fittings Mod. 2553

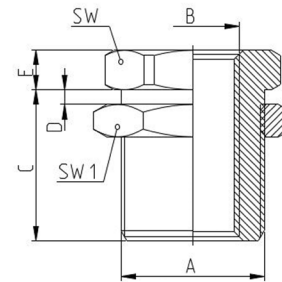
Reducing Sleeve



| DIMENSIONS | | | | | |
|--------------|------|------|------|----|------------|
| Mod. | B1 | B2 | L | SW | Weight (g) |
| 2553 M5-1/8 | M5 | G1/8 | 13.5 | 13 | 7 |
| 2553 1/8-1/4 | G1/8 | G1/4 | 17 | 17 | 18 |
| 2553 1/8-3/8 | G1/8 | G3/8 | 18 | 20 | 18 |
| 2553 1/8-1/2 | G1/8 | G1/2 | 21.5 | 24 | 28 |
| 2553 1/4-3/8 | G1/4 | G3/8 | 21.5 | 20 | 21 |
| 2553 1/4-1/2 | G1/4 | G1/2 | 23 | 24 | 32 |
| 2553 3/8-1/2 | G3/8 | G1/2 | 24 | 24 | 31 |

Fittings Mod. 2593

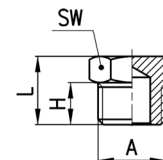
News



| Mod. | A | B | C | D | E | SW | SW1 |
|------------------|---------|------|------|----|-----|----|-----|
| 2593 M5-M10X1 | M10x1 | M5 | 10,5 | 7 | 3,5 | 14 | 14 |
| 2593 1/8-M16X1 | M16x1 | G1/8 | 14 | 10 | 4 | 19 | 22 |
| 2593 1/4-M20X1 | M20x1,5 | G1/4 | 21 | 16 | 4 | 24 | 27 |
| 2593 3/8-M26X1,5 | M26x1,5 | G3/8 | 21 | 15 | 5 | 30 | 32 |
| 2593 1/2-M28X1,5 | M28x1,5 | G1/2 | 27 | 21 | 6 | 32 | 36 |

Fittings Mod. 2611

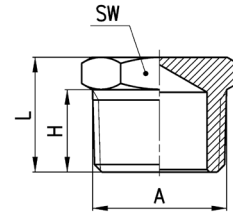
BSP Male Plug



| DIMENSIONS | | | | | |
|------------|------|----|------|----|------------|
| Mod. | A | H | L | SW | Weight (g) |
| 2611 M5 | M5 | 4 | 7,5 | 8 | 2 |
| 2611 1/8 | G1/8 | 6 | 10,5 | 13 | 7 |
| 2611 1/4 | G1/4 | 8 | 13 | 17 | 13 |
| 2611 3/8 | G3/8 | 9 | 14 | 19 | 18 |
| 2611 1/2 | G1/2 | 10 | 15,5 | 24 | 31 |
| 2611 1 | G1 | 13 | 19 | 38 | 76 |

Fitting Mod. 2610 3/4

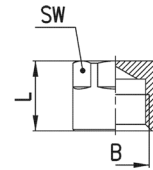
BSPT Male Plug



| DIMENSIONS | | | | | |
|------------|------|------|----|----|------------|
| Mod. | A | H | L | SW | Weight (g) |
| 2610 3/4 | R3/4 | 16,5 | 23 | 27 | 61 |

Fittings Mod. 2613

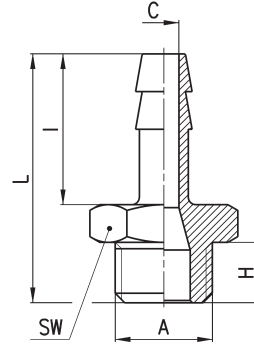
BSP Female Plug



| DIMENSIONS | | | | |
|------------|------|------|----|------------|
| Mod. | B | L | SW | Weight (g) |
| 2613 1/8 | G1/8 | 11 | 12 | 6 |
| 2613 1/4 | G1/4 | 13,5 | 15 | 13 |
| 2613 3/8 | G3/8 | 15,5 | 18 | 19 |
| 2613 1/2 | G1/2 | 22,5 | 19 | 33 |

Fittings Mod. 2601

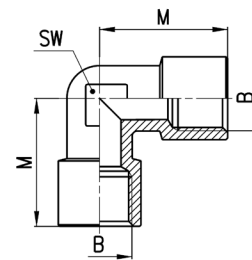
Metric-BSP Male Hose Adaptor



| DIMENSIONS | | | | | | | | |
|-------------|----|------|-----|----|----|------|----|------------|
| Mod. | N | A | C | H | I | L | SW | Weight (g) |
| 2601 2-M5 | 2 | M5 | 1,2 | 4 | 8 | 16 | 8 | 2 |
| 2601 4,5-M5 | 4 | M5 | 2,5 | 4 | 15 | 23 | 8 | 3 |
| 2601 7-1/8 | 7 | G1/8 | 4 | 6 | 20 | 30 | 12 | 9 |
| 2601 7-1/4 | 7 | G1/4 | 4 | 8 | 20 | 33 | 17 | 16 |
| 2601 8-1/8 | 8 | G1/8 | 5 | 6 | 20 | 30 | 12 | 10 |
| 2601 9-1/8 | 9 | G1/8 | 5,5 | 6 | 20 | 30 | 12 | 11 |
| 2601 9-1/4 | 9 | G1/4 | 6 | 8 | 20 | 33 | 17 | 17 |
| 2601 9-3/8 | 9 | G3/8 | 6 | 9 | 20 | 34 | 19 | 21 |
| 2601 12-1/4 | 12 | G1/4 | 8,5 | 8 | 20 | 33 | 17 | 20 |
| 2601 12-3/8 | 12 | G3/8 | 9 | 9 | 20 | 34 | 19 | 23 |
| 2601 12-1/2 | 12 | G1/2 | 9 | 10 | 20 | 35,5 | 24 | 34 |
| 2601 17-3/8 | 17 | G3/8 | 12 | 9 | 24 | 38 | 19 | 31 |
| 2601 17-1/2 | 17 | G1/2 | 13 | 10 | 24 | 39,5 | 24 | 41 |

Fittings Mod. 2013

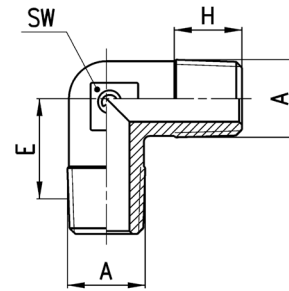
BSP Female Elbow



| DIMENSIONS | | | | |
|------------|------|------|----|------------|
| Mod. | B | M | SW | Weight (g) |
| 2013 1/8 | G1/8 | 19 | 11 | 16 |
| 2013 1/4 | G1/4 | 23 | 14 | 28 |
| 2013 3/8 | G3/8 | 25 | 16 | 39 |
| 2013 1/2 | G1/2 | 31,5 | 20 | 69 |

Fittings Mod. 2010

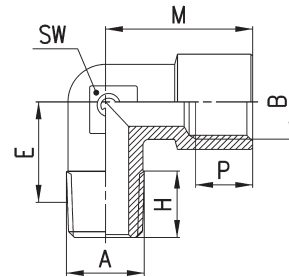
BSPT Male Elbow



| DIMENSIONS | | | | | |
|------------|------|------|------|----|------------|
| Mod. | A | E | H | SW | Weight (g) |
| 2010 1/8 | R1/8 | 11,5 | 7,5 | 9 | 10 |
| 2010 1/4 | R1/4 | 13,5 | 11 | 12 | 18 |
| 2010 3/8 | R3/8 | 15,5 | 11,5 | 14 | 28 |
| 2010 1/2 | R1/2 | 16 | 14 | 16 | 47 |
| 2010 3/4 | R3/4 | 19 | 16 | 25 | 103 |
| 2010 1 | R1 | 23 | 17 | 30 | 183 |

Fittings Mod. 2021 and 2020

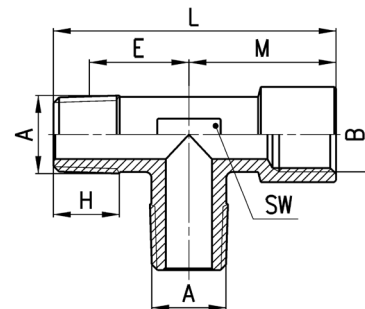
Mod. 2021: Metric Male Female Elbow
Mod. 2020: BSPT Male Female Elbow



| DIMENSIONS | | | | | | | | |
|--------------|------|------|------|------|------|---------|----|------------|
| Mod. | A | B | E | H | M | P (min) | SW | Weight (g) |
| 2021 M5-M5 | M5 | M5 | 9 | 4 | 10,5 | 4,5 | 9 | 7 |
| 2020 1/8-1/8 | R1/8 | G1/8 | 11,5 | 8,5 | 19 | 6 | 11 | 17 |
| 2020 1/4-1/4 | R1/4 | G1/4 | 15 | 11 | 23 | 7 | 13 | 27 |
| 2020 3/8-3/8 | R3/8 | G3/8 | 15 | 11,5 | 25 | 8 | 15 | 33 |
| 2020 1/2-1/2 | R1/2 | G1/2 | 17,5 | 14 | 31,5 | 9,5 | 20 | 63 |
| 2020 3/4-3/4 | R3/4 | G3/4 | 19 | 16 | 36,5 | 16,5 | 25 | 126 |
| 2020 1-1 | R1 | G1 | 23 | 17 | 45 | 19 | 30 | 209 |

Fittings Mod. 2050

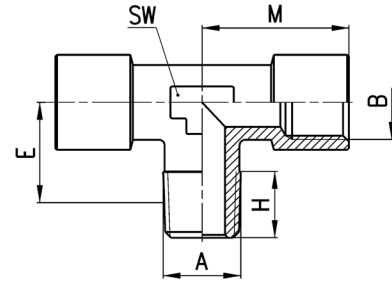
M.M.F. Tee



| DIMENSIONS | | | | | | | | |
|--------------|------|------|------|------|------|------|----|------------|
| Mod. | A | B | E | H | L | M | SW | Weight (g) |
| 2050 1/8-1/8 | R1/8 | G1/8 | 11,5 | 8,5 | 37 | 19 | 12 | 27 |
| 2050 1/4-1/4 | R1/4 | G1/4 | 15 | 11 | 46 | 23 | 13 | 35 |
| 2050 3/8-3/8 | R3/8 | G3/8 | 15 | 11,5 | 48,5 | 25 | 16 | 44 |
| 2050 1/2-1/2 | R1/2 | G1/2 | 17,5 | 14 | 60,5 | 31,5 | 20 | 83 |

Fittings Mod. 2060

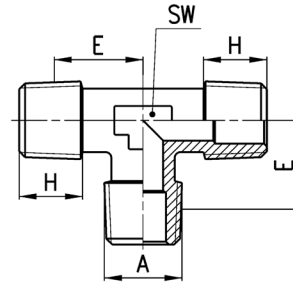
F.M.F. Tee



| DIMENSIONS | | | | | | | |
|--------------|------|------|------|------|------|----|------------|
| Mod. | A | B | E | H | M | SW | Weight (g) |
| 2060 1/8-1/8 | R1/8 | G1/8 | 11,5 | 8,5 | 19 | 12 | 22 |
| 2060 1/4-1/4 | R1/4 | G1/4 | 15 | 11 | 23 | 13 | 38 |
| 2060 3/8-3/8 | R3/8 | G3/8 | 15 | 11,5 | 25 | 16 | 49 |
| 2060 1/2-1/2 | R1/2 | G1/2 | 17,5 | 14 | 31,5 | 20 | 89 |

Fittings Mod. 2080

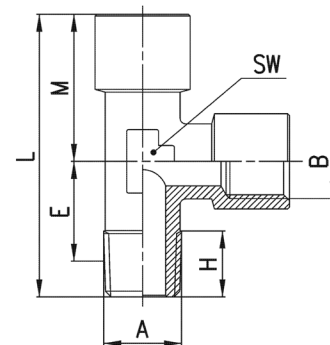
Male Tee



| DIMENSIONS | | | | | |
|------------|------|------|------|----|------------|
| Mod. | A | E | H | SW | Weight (g) |
| 2080 1/8 | R1/8 | 11,5 | 7,5 | 9 | 14 |
| 2080 1/4 | R1/4 | 13,5 | 11 | 12 | 25 |
| 2080 3/8 | R3/8 | 15,5 | 11,5 | 14 | 39 |
| 2080 1/2 | R1/2 | 16 | 14 | 16 | 82 |
| 2080 3/4 | R3/4 | 19 | 16,2 | 25 | 135 |
| 2080 1 | R1 | 23 | 17,5 | 30 | 239 |

Fittings Mod. 2070

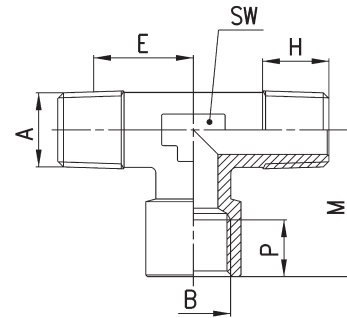
M.F.F. Tee



| DIMENSIONS | | | | | | | | |
|--------------|------|------|------|------|------|------|----|------------|
| Mod. | A | B | E | H | L | M | SW | Weight (g) |
| 2070 1/8-1/8 | R1/8 | G1/8 | 11,5 | 8,5 | 37 | 19 | 12 | 22 |
| 2070 1/4-1/4 | R1/4 | G1/4 | 15 | 11 | 46 | 23 | 13 | 37 |
| 2070 3/8-3/8 | R3/8 | G3/8 | 15 | 11,5 | 48,5 | 25 | 16 | 49 |
| 2070 1/2-1/2 | R1/2 | G1/2 | 17,5 | 14 | 60,5 | 31,5 | 20 | 89 |

Fittings Mod. 2090

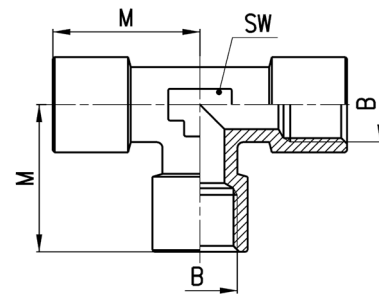
M.F.M. Tee



| DIMENSIONS | | | | | | | | |
|--------------|------|------|------|------|------|------|----|------------|
| Mod. | A | B | E | H | M | P | SW | Weight (g) |
| 2090 1/8-1/8 | R1/8 | G1/8 | 11,5 | 8,5 | 19 | 6 | 12 | 22 |
| 2090 1/4-1/4 | R1/4 | G1/4 | 15 | 11 | 23 | 7 | 13 | 37 |
| 2090 3/8-3/8 | R3/8 | G3/8 | 15 | 11,5 | 25 | 8 | 16 | 44 |
| 2090 1/2-1/2 | R1/2 | G1/2 | 17,5 | 14 | 31,5 | 9,5 | 20 | 83 |
| 2090 3/4-3/4 | R3/4 | G3/4 | 19 | 16 | 36,5 | 16,5 | 25 | 156 |
| 2090 1-1 | R1 | G1 | 23 | 17,5 | 45 | 19 | 30 | 262 |

Fittings Mod. 2003

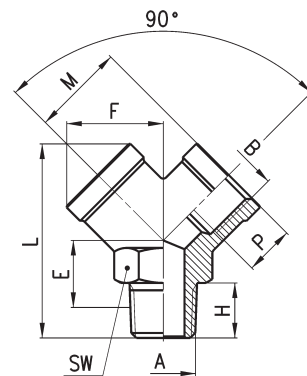
Female Tee



| DIMENSIONS | | | | |
|------------|------|------|----|------------|
| Mod. | B | M | SW | Weight (g) |
| 2003 1/8 | G1/8 | 19 | 12 | 23 |
| 2003 1/4 | G1/4 | 23 | 13 | 39 |
| 2003 3/8 | G3/8 | 25 | 16 | 54 |
| 2003 1/2 | G1/2 | 31,5 | 20 | 97 |

Fittings Mod. 2040

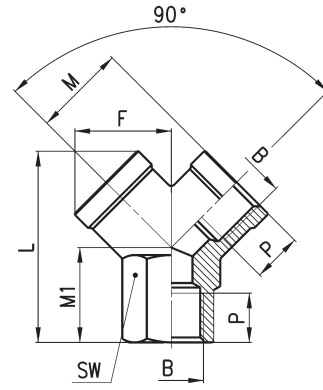
Y.F.M.F.



| DIMENSIONS | | | | | | | | | | |
|--------------|------|------|------|------|------|------|------|------|----|------------|
| Mod. | A | B | E | F | H | L | M | P | SW | Weight (g) |
| 2040 1/8-1/8 | R1/8 | G1/8 | 9,5 | 14,5 | 8 | 32 | 14 | 8 | 13 | 22 |
| 2040 1/4-1/4 | R1/4 | G1/4 | 12 | 18 | 11 | 38 | 17,5 | 11 | 17 | 38 |
| 2040 3/8-3/8 | R3/8 | G3/8 | 13,5 | 20,5 | 11,5 | 42,5 | 19 | 11,5 | 20 | 52 |
| 2040 1/2-1/2 | R1/2 | G1/2 | 15,5 | 26,5 | 14 | 53 | 24,5 | 14 | 25 | 110 |

Fittings Mod. 2043

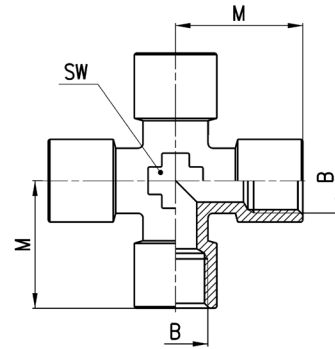
Female Y



| DIMENSIONS | | | | | | | | |
|------------|------|------|------|------|----|------|----|------------|
| Mod. | B | F | L | M | M1 | P | SW | Weight (g) |
| 2043 1/8 | G1/8 | 14,5 | 26,5 | 14 | 12 | 8 | 13 | 18 |
| 2043 1/4 | G1/4 | 18 | 32 | 17,5 | 14 | 11 | 17 | 32 |
| 2043 3/8 | G3/8 | 20,5 | 37 | 19 | 16 | 11,5 | 20 | 44 |
| 2043 1/2 | G1/2 | 26,5 | 45 | 24,5 | 19 | 14 | 25 | 84 |

Fittings Mod. 2033

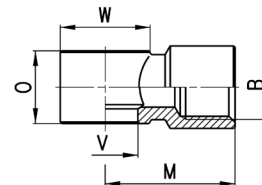
Female Cross



| DIMENSIONS | | | | |
|------------|------|----|----|------------|
| Mod. | B | M | SW | Weight (g) |
| 2033 1/8 | G1/8 | 19 | 12 | 27 |
| 2033 1/4 | G1/4 | 23 | 14 | 51 |
| 2033 3/8 | G3/8 | 25 | 16 | 70 |

Fittings Mod. 2023

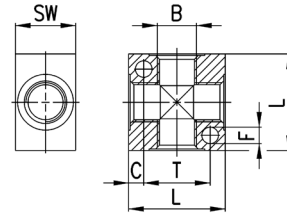
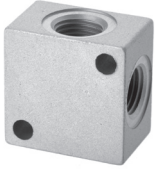
Single Thread Banjo



| DIMENSIONS | | | | | | | |
|--------------|------|------|------|------|------|------------|------------------------------|
| Mod. | B | M | O | V | W | Weight (g) | assembled with Mod. |
| 2023 M5-M5 | M5 | 10.5 | 9 | 5.1 | 9 | 6 | 1631 |
| 2023 M5-M6 | M5 | 10.5 | 9 | 5.1 | 9 | 6 | SCU, SVU, SCO... |
| 2023 1/8-1/8 | G1/8 | 20 | 14.5 | 9.8 | ∅ 14 | 14 | 1631, 1635, SCU, SVU, SCO... |
| 2023 1/4-1/4 | G1/4 | 23.5 | 14.5 | 13.2 | ∅ 18 | 21 | 1635, SCU, SVU, SCO... |
| 2023 3/8-3/8 | G3/8 | 26.5 | 14.5 | 16.7 | ∅ 21 | 27 | 1635, SCU, SVU, SCO... |

Accessories Mod. 3033

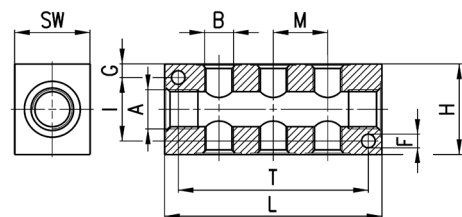
4 Ways Distribution Block with fixing holes
Material: anodized Aluminium



| DIMENSIONS | | | | | | | |
|------------|------|---|-----|----|----|----|------------|
| Mod. | B | C | F | L | T | SW | Weight (g) |
| 3033 1/8 | G1/8 | 4 | 4,5 | 25 | 17 | 16 | 18 |
| 3033 1/4 | G1/4 | 5 | 5,5 | 32 | 22 | 20 | 35 |
| 3033 3/8 | G3/8 | 7 | 5,5 | 40 | 26 | 25 | 73 |
| 3033 1/2 | G1/2 | 8 | 5,5 | 50 | 34 | 30 | 137 |

Accessories Mod. 3043

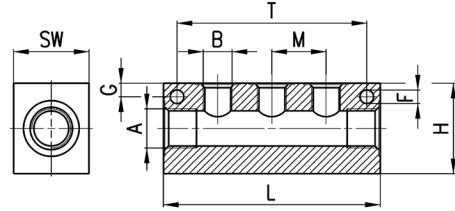
Manifold with double lateral outlets
Material: anodized Aluminium



| DIMENSIONS | | | | | | | | | | | | |
|-----------------|------|------------------------|------|-----|-----|----|----|-----|----|-----|----|------------|
| Mod. | A | DOUBLE LATERAL OUTLETS | B | F | G | H | I | L | M | T | SW | Weight (g) |
| 3043 1/4-3D-1/8 | G1/4 | 3 | G1/8 | 4.5 | 4.5 | 30 | 21 | 72 | 18 | 63 | 20 | 85 |
| 3043 1/4-4D-1/8 | G1/4 | 4 | G1/8 | 4.5 | 4.5 | 30 | 21 | 90 | 18 | 81 | 20 | 107 |
| 3043 1/4-5D-1/8 | G1/4 | 5 | G1/8 | 4.5 | 4.5 | 30 | 21 | 108 | 18 | 99 | 20 | 128 |
| 3043 1/4-6D-1/8 | G1/4 | 6 | G1/8 | 4.5 | 4.5 | 30 | 21 | 126 | 18 | 117 | 20 | 151 |
| 3043 3/8-3D-1/4 | G3/8 | 3 | G1/4 | 5.5 | 6 | 40 | 28 | 92 | 24 | 75 | 25 | 177 |
| 3043 3/8-4D-1/4 | G3/8 | 4 | G1/4 | 5.5 | 6 | 40 | 28 | 116 | 24 | 99 | 25 | 224 |
| 3043 3/8-5D-1/4 | G3/8 | 5 | G1/4 | 5.5 | 6 | 40 | 28 | 140 | 24 | 123 | 25 | 270 |
| 3043 3/8-6D-1/4 | G3/8 | 6 | G1/4 | 5.5 | 6 | 40 | 28 | 164 | 24 | 147 | 25 | 315 |
| 3043 1/2-3D-3/8 | G1/2 | 3 | G3/8 | 5.5 | 6.5 | 50 | 37 | 104 | 26 | 85 | 30 | 287 |
| 3043 1/2-4D-3/8 | G1/2 | 4 | G3/8 | 5.5 | 6.5 | 50 | 37 | 130 | 26 | 111 | 30 | 356 |
| 3043 1/2-5D-3/8 | G1/2 | 5 | G3/8 | 5.5 | 6.5 | 50 | 37 | 156 | 26 | 137 | 30 | 427 |
| 3043 1/2-6D-3/8 | G1/2 | 6 | G3/8 | 5.5 | 6.5 | 50 | 37 | 182 | 26 | 163 | 30 | 495 |

Accessories Mod. 3053

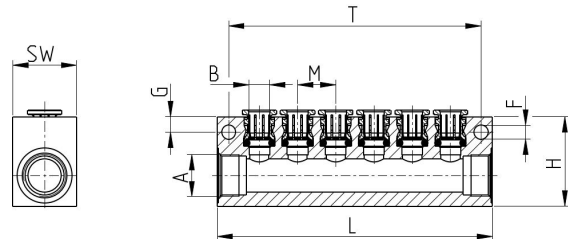
Manifold with lateral outlets
Material: anodized Aluminium



| DIMENSIONS | | | | | | | | | | | |
|-----------------|------|------------------------|------|-----|-----|----|-----|----|-----|----|------------|
| Mod. | A | SINGLE LATERAL OUTLETS | B | F | G | H | L | M | T | SW | Weight (g) |
| 3053 1/4-3L-1/8 | G1/4 | 3 | G1/8 | 4,5 | 4,5 | 30 | 72 | 18 | 63 | 20 | 92 |
| 3053 1/4-4L-1/8 | G1/4 | 4 | G1/8 | 4,5 | 4,5 | 30 | 90 | 18 | 81 | 20 | 116 |
| 3053 1/4-5L-1/8 | G1/4 | 5 | G1/8 | 4,5 | 4,5 | 30 | 108 | 18 | 99 | 20 | 140 |
| 3053 1/4-6L-1/8 | G1/4 | 6 | G1/8 | 4,5 | 4,5 | 30 | 126 | 18 | 117 | 20 | 164 |
| 3053 3/8-3L-1/4 | G3/8 | 3 | G1/4 | 5,5 | 6 | 40 | 92 | 24 | 75 | 25 | 191 |
| 3053 3/8-4L-1/4 | G3/8 | 4 | G1/4 | 5,5 | 6 | 40 | 116 | 24 | 99 | 25 | 243 |
| 3053 3/8-5L-1/4 | G3/8 | 5 | G1/4 | 5,5 | 6 | 40 | 140 | 24 | 123 | 25 | 294 |
| 3053 3/8-6L-1/4 | G3/8 | 6 | G1/4 | 5,5 | 6 | 40 | 164 | 24 | 147 | 25 | 345 |
| 3053 1/2-3L-3/8 | G1/2 | 3 | G3/8 | 5,5 | 6,5 | 50 | 104 | 26 | 85 | 30 | 313 |
| 3053 1/2-4L-3/8 | G1/2 | 4 | G3/8 | 5,5 | 6,5 | 50 | 130 | 26 | 111 | 30 | 395 |
| 3053 1/2-5L-3/8 | G1/2 | 5 | G3/8 | 5,5 | 6,5 | 50 | 156 | 26 | 137 | 30 | 474 |
| 3053 1/2-6L-3/8 | G1/2 | 6 | G3/8 | 5,5 | 6,5 | 50 | 182 | 26 | 163 | 30 | 551 |

Fittings Mod. 3053

News



| Mod. | A | SINGLE LATERAL OUTLETS | B | L | G | M | T | H | F | SW | Weight (g) |
|----------------|------|------------------------|----|-----|-----|----|-----|----|-----|----|------------|
| 3053 1/4-8L-4 | G1/4 | 8 | 4 | 97 | 4,5 | 10 | 88 | 30 | 4,5 | 20 | 140 |
| 3053 1/4-8L-6 | G1/4 | 8 | 6 | 120 | 4,5 | 13 | 111 | 30 | 4,5 | 20 | 172 |
| 3053 3/8-6L-8 | G3/8 | 6 | 8 | 108 | 6 | 15 | 99 | 35 | 5,5 | 25 | 210 |
| 3053 1/2-6L-10 | G1/2 | 6 | 10 | 127 | 6,5 | 17 | 118 | 45 | 5,5 | 30 | 365 |