

Silencer push in type

SLW-H* Series

- Joint port size: 6, 8, 10 and 12 dia.

JIS symbol



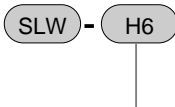
Specifications

Descriptions	SLW-H6	SLW-H8	SLW-H10	SLW-H12
Working fluid	Compressed air			
Max. working pressure MPa	0.7			
Min. working pressure MPa	0			
Withstanding pressure MPa	1.05			
Fluid temperature °C	5 to 60 (to be unfrozen. Note 2)			
Ambient temperature °C	-10 to 60 (to be unfrozen.)			
Connecting joint diameter	6 dia.	8 dia.	10 dia.	12 dia.
Product mass g	16.0	15.0	28.0	57.5
Damping effect dB [A]	20 and over			
Flow rate Note 1 ℓ/min	455	550	1135	1655
Effective sectional area mm ²	7	8.5	17.5	25.5

Note 1: Flow rate is the atmospheric pressure conversion value at pressure 0.5MPa.

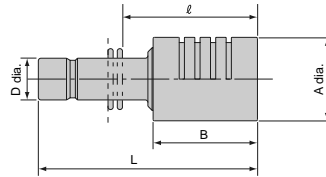
Note 2: Could be frozen by adiabatic expansion depending on air quality (dew point).

How to order



A Port size	
H6	6 dia.
H8	8 dia.
H10	10 dia.
H12	12 dia.

Dimensions



Model no.	A	B	D	L	ℓ*
SLW-H6	16	20	6 dia.	41	23.5
SLW-H8	16	20	8 dia.	42	23
SLW-H10	20	27	10 dia.	53	31.5
SLW-H12	25	37	12 dia.	66	43

*Dimensions apply for CKD joints (GW series).

Refrigerating type dryer

Desiccant type dryer
High polymer membrane dryer

Air filter

Automatic drain other

F.R.L (Module)

F.R.L (Separate)

Small F.R.

Pressure R.

Electro pneumatic R.

Auxiliary

Flow control valve

Silencer

Check valve / others

Joint / tube

Vacuum F.

Vacuum R.

Vacuum generator

Vacuum auxiliary / pad

Mechanical pressure SW

Electronic pressure SW

Electronic dif. pres. SW

Seating / close contact conf. SW

Pressure SW for coolant

Flow sensor for air

Total air system

Water cooling refrigerator

Flow sensor for water

Flow sensor for water

Silencer Push in type