

Pokrętła

Technopolimer

MATERIAŁ

Wysokouderowy technopolimer na bazie polipropylenu (PP), kolor czarny, wykończony na mat.

VCT.25: wzmocniony włóknami szklanymi, technopolimer na bazie poliamidu (PA), kolor czarny, wykończony na mat.

KOLOROWA ZAŚLEPKA CENTRALNA

Technopolimer na bazie polipropylenu (PP), dostępny w jednym z standardowych kolorów wykończonych na mat. Niedostępne dla wielkości VCT.25.

Zamawiając należy dodać indeks koloru (C9,...,C17) do kodu i oznaczenia produktu.

Na życzenie i dla odpowiednich ilości, może być dostarczona w innych kolorach, ze specjalnymi symbolami, znakami lub napisami.

WYKONANIA STANDARDOWE

- **VCT-A:** wtopka stalowa, oksydowana na czarno, otwór gładki, nieprzelotowy.
- **VCT-B:** wtopka mosiężna, otwór gwintowany, nieprzelotowy (VCT.25 - 95) lub otwór gwintowany, przelotowy (VCT.32 - 40 - 50 - 63 - 74 - 84).
- **VCT-AZ:** wtopka ze stali ocynkowanej, otwór gwintowany, przelotowy.
- **VCT-SST:** wtopka ze stali nierdzewnej AISI 303, otwór gwintowany, nieprzelotowy (VCT.25 - 95) lub otwór gwintowany, przelotowy (VCT.32 - 40 - 50 - 63 - 74 - 84).
- **VCT-FP:** wtopka mosiężna, otwór gwintowany, przelotowy, bez zaślepki.
- **VCT-AZ-FP:** wtopka ze stali ocynkowanej, otwór gwintowany, przelotowy, bez zaślepki.
- **VCT-SST-FP:** wtopka ze stali nierdzewnej AISI 303, otwór gwintowany, przelotowy, bez zaślepki.
- **VCT-p:** trzpień gwintowany ze stali ocynkowanej, ze sfazowanym płaskim czołem, wg UNI 947 : ISO 4753 (patrz Dane techniczne na stronie).
- **VCT-SST-p:** trzpień gwintowany ze stali nierdzewnej AISI 303, ze sfazowanym płaskim czołem, wg UNI 947 : ISO 4753 (patrz Dane techniczne na stronie).

AKCESORIA

Kolorowe zaślepki centralne (patrz tabela).



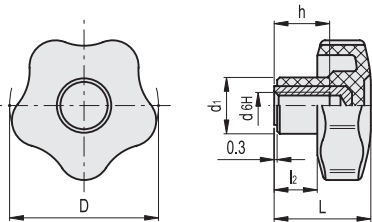
ELESA Original design

| Zaślepka dla | C9 | C2 | C3 | C4 | C5 | C6 | Oznaczenie |
|--------------|------|------|------|------|------|------|-------------------|
| VCT.32 | 6900 | 6903 | 6904 | 6905 | 6906 | 6901 | CA.VCT.32-* |
| VCT.40 | 6910 | 6913 | 6914 | 6915 | 6916 | 6911 | CA.VCT.40-* |
| VCT.50 | 6920 | 6923 | 6924 | 6925 | 6926 | 6921 | CA.VCT.50-* |
| VCT.63-74-95 | 6930 | 6933 | 6934 | 6935 | 6936 | 6931 | CA.VCT.63-74-95-* |
| VCT.84 | 6980 | 6983 | 6984 | 6986 | 6981 | 6987 | CA.VCT.84-* |

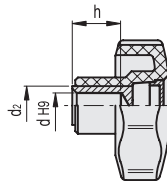
* Uzupełnij kod i oznaczenie dodając symbol koloru (C9, ..., C6).



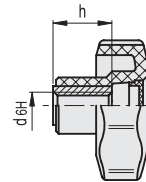
VCT.25-B
VCT.25-SST



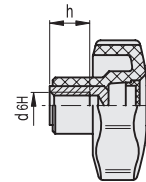
VCT-A



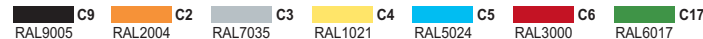
VCT.32-40-50-63-74-84-B
VCT-AZ
VCT.32-40-50-63-74-84-SST



VCT.95-B



* Uzupełnij oznaczenie o symbol koloru, przykład: 69841-C2 VCT.32 A-6-C2



VCT-A

| Kod | Oznaczenie | D | dH9 | L | d1 | d2 | l2 | h | ⚖ |
|---------|---------------|----|-----|------|----|----|----|----|----|
| 69841-* | VCT.32 A-6-* | 32 | 6 | 23 | 15 | 12 | 10 | 12 | 34 |
| 69892-* | VCT.40 A-8-* | 40 | 8 | 27 | 17 | 12 | 12 | 14 | 36 |
| 69951-* | VCT.50 A-8-* | 50 | 8 | 32 | 19 | 12 | 14 | 14 | 37 |
| 69952-* | VCT.50 A-10-* | 50 | 10 | 32 | 19 | 15 | 14 | 16 | 34 |
| 70001-* | VCT.63 A-8-* | 63 | 8 | 37 | 22 | 15 | 16 | 20 | 52 |
| 70002-* | VCT.63 A-10-* | 63 | 10 | 37 | 22 | 16 | 16 | 21 | 49 |
| 70003-* | VCT.63 A-12-* | 63 | 12 | 37 | 22 | 16 | 16 | 21 | 48 |
| 70051-* | VCT.74 A-8-* | 74 | 8 | 43.5 | 26 | 15 | 22 | 20 | 65 |
| 70053-* | VCT.74 A-12-* | 74 | 12 | 43.5 | 26 | 15 | 22 | 20 | 62 |
| 70055-* | VCT.74 A-16-* | 74 | 16 | 43.5 | 26 | 20 | 22 | 20 | 60 |
| 70123-* | VCT.84 A-12-* | 84 | 12 | 44 | 28 | 20 | 21 | 25 | 91 |
| 70125-* | VCT.84 A-16-* | 84 | 16 | 44 | 28 | 20 | 21 | 25 | 93 |



*Uzupełnić oznaczenie o symbol koloru, przykład: 69843-C2 VCT.32 B-M5-C2

C9
 C2
 C3
 C4
 C5
 C6
 C17
 RAL9005 RAL2004 RAL7035 RAL1021 RAL5024 RAL3000 RAL6017

VCT-B

| Kod | Oznaczenie | D | d6H | L | d1 | l2 | h | C# [Nm] | ⚖️ |
|----------|----------------|----|-----|------|----|----|----|------------|-----|
| 69811-C9 | VCT.25 B-M4-C9 | 25 | M4 | 19 | 13 | 8 | 10 | 6 | 7 |
| 69812-C9 | VCT.25 B-M5-C9 | 25 | M5 | 19 | 13 | 8 | 10 | 7 | 6 |
| 69813-C9 | VCT.25 B-M6-C9 | 25 | M6 | 19 | 13 | 8 | 10 | 7 | 5 |
| 69843-* | VCT.32 B-M5-* | 32 | M5 | 23 | 15 | 10 | 12 | 10 | 11 |
| 69844-* | VCT.32 B-M6-* | 32 | M6 | 23 | 15 | 10 | 12 | 10 | 10 |
| 69845-* | VCT.32 B-M8-* | 32 | M8 | 23 | 15 | 10 | 12 | 10 | 9 |
| 69893-* | VCT.40 B-M6-* | 40 | M6 | 27 | 17 | 12 | 18 | 16 | 26 |
| 69894-* | VCT.40 B-M8-* | 40 | M8 | 27 | 17 | 12 | 18 | 18 | 24 |
| 69895-* | VCT.40 B-M10-* | 40 | M10 | 27 | 17 | 12 | 17 | 18 | 23 |
| 69953-* | VCT.50 B-M8-* | 50 | M8 | 32 | 19 | 14 | 20 | 25 | 38 |
| 69954-* | VCT.50 B-M10-* | 50 | M10 | 32 | 19 | 14 | 20 | 27 | 34 |
| 69955-* | VCT.50 B-M12-* | 50 | M12 | 32 | 19 | 14 | 20 | 27 | 30 |
| 70012-* | VCT.63 B-M8-* | 63 | M8 | 37 | 22 | 16 | 26 | 48 | 45 |
| 70013-* | VCT.63 B-M10-* | 63 | M10 | 37 | 22 | 16 | 26 | 50 | 42 |
| 70014-* | VCT.63 B-M12-* | 63 | M12 | 37 | 22 | 16 | 26 | 50 | 40 |
| 70062-* | VCT.74 B-M12-* | 74 | M12 | 43.5 | 26 | 22 | 26 | 60 | 57 |
| 70063-* | VCT.74 B-M14-* | 74 | M14 | 43.5 | 26 | 22 | 26 | 65 | 53 |
| 70064-* | VCT.74 B-M16-* | 74 | M16 | 43.5 | 26 | 22 | 31 | 69 | 55 |
| 70133-* | VCT.84 B-M12-* | 84 | M12 | 44 | 28 | 21 | 25 | 65 | 91 |
| 70135-* | VCT.84 B-M16-* | 84 | M16 | 44 | 28 | 21 | 25 | 75 | 93 |
| 70097-* | VCT.95 B-M16-* | 95 | M16 | 46 | 32 | 21 | 22 | 100 | 109 |

VCT-AZ

| Kod | Oznaczenie | D | d6H | L | d1 | l2 | h | C# [Nm] | ⚖️ |
|----------|------------------|----|-----|------|----|----|----|------------|----|
| 69741-C9 | VCT.32 AZ-M4-C9 | 32 | M4 | 23 | 15 | 10 | 12 | 10 | 12 |
| 69742-C9 | VCT.32 AZ-M5-C9 | 32 | M5 | 23 | 15 | 10 | 12 | 10 | 11 |
| 69743-C9 | VCT.32 AZ-M6-C9 | 32 | M6 | 23 | 15 | 10 | 12 | 10 | 10 |
| 69752-C9 | VCT.40 AZ-M6-C9 | 40 | M6 | 27 | 17 | 12 | 18 | 16 | 26 |
| 69753-C9 | VCT.40 AZ-M8-C9 | 40 | M8 | 27 | 17 | 12 | 18 | 18 | 24 |
| 69761-C9 | VCT.50 AZ-M8-C9 | 50 | M8 | 32 | 19 | 14 | 20 | 25 | 38 |
| 69762-C9 | VCT.50 AZ-M10-C9 | 50 | M10 | 32 | 19 | 14 | 20 | 27 | 34 |
| 69772-C9 | VCT.63 AZ-M10-C9 | 63 | M10 | 37 | 22 | 16 | 26 | 50 | 42 |
| 69773-C9 | VCT.63 AZ-M12-C9 | 63 | M12 | 37 | 22 | 16 | 26 | 50 | 40 |
| 69782-C9 | VCT.74 AZ-M12-C9 | 74 | M12 | 43.5 | 26 | 22 | 26 | 60 | 57 |
| 69784-C9 | VCT.74 AZ-M16-C9 | 74 | M16 | 43.5 | 26 | 22 | 31 | 69 | 55 |
| 69794-C9 | VCT.84 AZ-M16-C9 | 84 | M16 | 44 | 28 | 21 | 25 | 75 | 93 |

VCT-SST

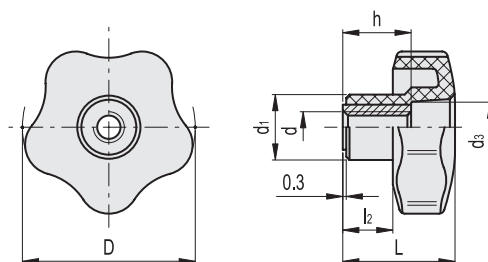
STAINLESS STEEL

| Kod | Oznaczenie | D | d6H | L | d1 | l2 | h | C# [Nm] | ⚖️ |
|----------|------------------|----|-----|------|----|----|----|------------|----|
| 69807-C9 | VCT.25-SST-M4-C9 | 25 | M4 | 19 | 13 | 8 | 10 | 7 | 6 |
| 69873-* | VCT.32-SST-M5-* | 32 | M5 | 23 | 15 | 10 | 12 | 10 | 11 |
| 69874-* | VCT.32-SST-M6-* | 32 | M6 | 23 | 15 | 10 | 12 | 10 | 10 |
| 69941-* | VCT.40-SST-M6-* | 40 | M6 | 27 | 17 | 12 | 18 | 16 | 26 |
| 69943-* | VCT.40-SST-M8-* | 40 | M8 | 27 | 17 | 12 | 18 | 18 | 24 |
| 69991-* | VCT.50-SST-M8-* | 50 | M8 | 32 | 19 | 14 | 20 | 27 | 39 |
| 69993-* | VCT.50-SST-M10-* | 50 | M10 | 32 | 19 | 14 | 20 | 27 | 35 |
| 70005-* | VCT.63-SST-M10-* | 63 | M10 | 37 | 22 | 16 | 26 | 50 | 43 |
| 70006-* | VCT.63-SST-M12-* | 63 | M12 | 37 | 22 | 16 | 26 | 50 | 41 |
| 70056-* | VCT.74-SST-M12-* | 74 | M12 | 43.5 | 26 | 22 | 26 | 60 | 58 |
| 70183-* | VCT.84-SST-M16-* | 84 | M16 | 44 | 28 | 21 | 25 | 75 | 94 |

"Maks. moment siły dokręcania (C)" oznacza wartość poniżej której metalowa wtopka, w normalnych warunkach użytkowania, jest ściśle połączona z tworzywem. Uwaga: jako maksymalny możliwy do uzyskania przez dorosłego człowieka moment siły dokręcania dłońmi przyjmuje się 5-6 Nm.



VCT-FP
VCT-AZ-FP
VCT-SST-FP



VCT-FP

| Kod | Oznaczenie | D | d6H | L | d1 | d3 | l2 | h | ⚖ |
|-------|---------------|----|-----|------|----|----|----|----|----|
| 69847 | VCT.32 FP-M5 | 32 | M5 | 23 | 15 | 10 | 10 | 12 | 11 |
| 69848 | VCT.32 FP-M6 | 32 | M6 | 23 | 15 | 10 | 10 | 12 | 10 |
| 69849 | VCT.32 FP-M8 | 32 | M8 | 23 | 15 | 10 | 10 | 12 | 9 |
| 69897 | VCT.40 FP-M6 | 40 | M6 | 27 | 17 | 12 | 12 | 18 | 26 |
| 69898 | VCT.40 FP-M8 | 40 | M8 | 27 | 17 | 12 | 12 | 18 | 24 |
| 69899 | VCT.40 FP-M10 | 40 | M10 | 27 | 17 | 12 | 12 | 17 | 23 |
| 69956 | VCT.50 FP-M8 | 50 | M8 | 32 | 19 | 15 | 14 | 20 | 38 |
| 69957 | VCT.50 FP-M10 | 50 | M10 | 32 | 19 | 15 | 14 | 20 | 34 |
| 69958 | VCT.50 FP-M12 | 50 | M12 | 32 | 19 | 15 | 14 | 20 | 30 |
| 70016 | VCT.63 FP-M8 | 63 | M8 | 37 | 22 | 19 | 16 | 26 | 44 |
| 70017 | VCT.63 FP-M10 | 63 | M10 | 37 | 22 | 19 | 16 | 26 | 42 |
| 70018 | VCT.63 FP-M12 | 63 | M12 | 37 | 22 | 19 | 16 | 26 | 40 |
| 70067 | VCT.74 FP-M12 | 74 | M12 | 43.5 | 26 | 17 | 22 | 26 | 56 |
| 70068 | VCT.74 FP-M14 | 74 | M14 | 43.5 | 26 | 17 | 22 | 26 | 52 |
| 70069 | VCT.74 FP-M16 | 74 | M16 | 43.5 | 26 | 17 | 22 | 31 | 54 |
| 70143 | VCT.84 FP-M12 | 84 | M12 | 44 | 28 | 24 | 21 | 25 | 92 |
| 70145 | VCT.84 FP-M16 | 84 | M16 | 44 | 28 | 24 | 21 | 25 | 91 |

VCT-AZ-FP

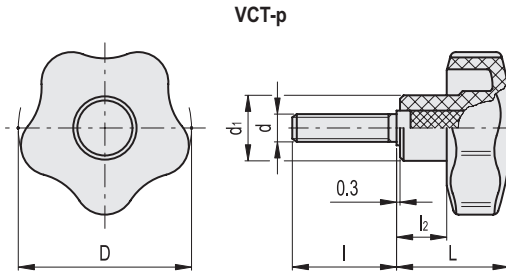
| Kod | Oznaczenie | D | d6H | L | d1 | d3 | l2 | h | ⚖ |
|-------|------------------|----|-----|------|----|----|----|----|----|
| 69746 | VCT.32 AZ-FP-M6 | 32 | M6 | 23 | 15 | 10 | 10 | 12 | 10 |
| 69756 | VCT.40 AZ-FP-M8 | 40 | M8 | 27 | 17 | 12 | 12 | 18 | 26 |
| 69766 | VCT.50 AZ-FP-M8 | 50 | M8 | 32 | 19 | 15 | 14 | 20 | 38 |
| 69767 | VCT.50 AZ-FP-M10 | 50 | M10 | 32 | 19 | 15 | 14 | 20 | 34 |
| 69776 | VCT.63 AZ-FP-M12 | 63 | M12 | 37 | 22 | 19 | 16 | 26 | 40 |
| 69786 | VCT.74 AZ-FP-M12 | 74 | M12 | 43.5 | 26 | 17 | 22 | 31 | 56 |
| 69796 | VCT.84 AZ-FP-M16 | 84 | M16 | 44 | 28 | 24 | 21 | 25 | 92 |

VCT-SST-FP

STAINLESS STEEL

| Kod | Oznaczenie | D | d6H | L | d1 | d3 | l2 | h | ⚖ |
|-------|-------------------|----|-----|------|----|----|----|----|----|
| 69877 | VCT.32-SST-FP-M5 | 32 | M5 | 23 | 15 | 10 | 10 | 12 | 12 |
| 69878 | VCT.32-SST-FP-M6 | 32 | M6 | 23 | 15 | 10 | 10 | 12 | 13 |
| 69942 | VCT.40-SST-FP-M6 | 40 | M6 | 27 | 17 | 12 | 12 | 18 | 27 |
| 69944 | VCT.40-SST-FP-M8 | 40 | M8 | 27 | 17 | 12 | 12 | 18 | 25 |
| 69992 | VCT.50-SST-FP-M8 | 50 | M8 | 32 | 19 | 15 | 14 | 20 | 39 |
| 69994 | VCT.50-SST-FP-M10 | 50 | M10 | 32 | 19 | 15 | 14 | 20 | 35 |
| 70007 | VCT.63-SST-FP-M10 | 63 | M10 | 37 | 22 | 19 | 16 | 26 | 43 |
| 70008 | VCT.63-SST-FP-M12 | 63 | M12 | 37 | 22 | 19 | 16 | 26 | 41 |
| 70057 | VCT.74-SST-FP-M12 | 74 | M12 | 43.5 | 26 | 17 | 22 | 26 | 57 |
| 70185 | VCT.84-SST-FP-M16 | 84 | M16 | 44 | 28 | 24 | 21 | 25 | 92 |

"Maks. moment siły dokręcania (C)" oznacza wartość poniżej której metalowa wtopka, w normalnych warunkach użytkowania, jest ściśle połączona z tworzywem. Uwaga: jako maksymalny możliwy do uzyskania przez dorosłego człowieka moment siły dokręcania dłońmi przyjmuje się 5-6 Nm.



*Uzupełnić oznaczenie o symbol koloru, przykład: 69872-C2 VCT.32 p-M5x20-C2

C9 RAL9005
 C2 RAL2004
 C3 RAL7035
 C4 RAL1021
 C5 RAL5024
 C6 RAL3000
 C17 RAL6017

VCT-p

| Kod | Oznaczenie | D | d6g | L | d1 | l | l2 | C# | [Nm] |
|----------|-------------------|----|-----|----|----|----|----|----|------|
| 69816-C9 | VCT.25 p-M4x6-C9 | 25 | M4 | 19 | 13 | 6 | 8 | 5 | 5 |
| 69817-C9 | VCT.25 p-M4x10-C9 | 25 | M4 | 19 | 13 | 10 | 8 | 5 | 6 |
| 69821-C9 | VCT.25 p-M5x10-C9 | 25 | M5 | 19 | 13 | 10 | 8 | 6 | 7 |
| 69822-C9 | VCT.25 p-M5x16-C9 | 25 | M5 | 19 | 13 | 16 | 8 | 6 | 8 |
| 69823-C9 | VCT.25 p-M5x20-C9 | 25 | M5 | 19 | 13 | 20 | 8 | 6 | 9 |
| 69824-C9 | VCT.25 p-M5x25-C9 | 25 | M5 | 19 | 13 | 25 | 8 | 6 | 10 |
| 69825-C9 | VCT.25 p-M5x30-C9 | 25 | M5 | 19 | 13 | 30 | 8 | 6 | 12 |
| 69826-C9 | VCT.25 p-M5x40-C9 | 25 | M5 | 19 | 13 | 40 | 8 | 6 | 14 |
| 69831-C9 | VCT.25 p-M6x10-C9 | 25 | M6 | 19 | 13 | 10 | 8 | 6 | 8 |
| 69832-C9 | VCT.25 p-M6x16-C9 | 25 | M6 | 19 | 13 | 16 | 8 | 6 | 9 |
| 69833-C9 | VCT.25 p-M6x20-C9 | 25 | M6 | 19 | 13 | 20 | 8 | 6 | 10 |
| 69835-C9 | VCT.25 p-M6x25-C9 | 25 | M6 | 19 | 13 | 25 | 8 | 6 | 11 |
| 69834-C9 | VCT.25 p-M6x30-C9 | 25 | M6 | 19 | 13 | 30 | 8 | 6 | 13 |
| 69836-C9 | VCT.25 p-M6x40-C9 | 25 | M6 | 19 | 13 | 40 | 8 | 6 | 15 |
| 69872-* | VCT.32 p-M5x20-* | 32 | M5 | 23 | 15 | 20 | 10 | 6 | 13 |
| 69851-* | VCT.32 p-M6x16-* | 32 | M6 | 23 | 15 | 16 | 10 | 8 | 13 |
| 69852-* | VCT.32 p-M6x20-* | 32 | M6 | 23 | 15 | 20 | 10 | 8 | 14 |
| 69853-* | VCT.32 p-M6x25-* | 32 | M6 | 23 | 15 | 25 | 10 | 8 | 15 |
| 69854-* | VCT.32 p-M6x30-* | 32 | M6 | 23 | 15 | 30 | 10 | 8 | 16 |
| 69855-* | VCT.32 p-M6x35-* | 32 | M6 | 23 | 15 | 35 | 10 | 8 | 17 |
| 69856-* | VCT.32 p-M6x40-* | 32 | M6 | 23 | 15 | 40 | 10 | 8 | 18 |
| 69857-* | VCT.32 p-M6x45-* | 32 | M6 | 23 | 15 | 45 | 10 | 8 | 19 |
| 69858-* | VCT.32 p-M6x50-* | 32 | M6 | 23 | 15 | 50 | 10 | 8 | 20 |
| 69860-* | VCT.32 p-M6x60-* | 32 | M6 | 23 | 15 | 60 | 10 | 8 | 21 |
| 69859-* | VCT.32 p-M8x16-* | 32 | M8 | 23 | 15 | 16 | 10 | 8 | 14 |
| 69861-* | VCT.32 p-M8x20-* | 32 | M8 | 23 | 15 | 20 | 10 | 8 | 18 |
| 69863-* | VCT.32 p-M8x30-* | 32 | M8 | 23 | 15 | 30 | 10 | 8 | 21 |
| 69865-* | VCT.32 p-M8x40-* | 32 | M8 | 23 | 15 | 40 | 10 | 8 | 24 |
| 69867-* | VCT.32 p-M8x50-* | 32 | M8 | 23 | 15 | 50 | 10 | 8 | 26 |
| 69901-* | VCT.40 p-M6x20-* | 40 | M6 | 27 | 17 | 20 | 12 | 13 | 18 |
| 69902-* | VCT.40 p-M6x25-* | 40 | M6 | 27 | 17 | 25 | 12 | 13 | 19 |
| 69903-* | VCT.40 p-M6x30-* | 40 | M6 | 27 | 17 | 30 | 12 | 13 | 20 |
| 69911-* | VCT.40 p-M8x16-* | 40 | M8 | 27 | 17 | 16 | 12 | 16 | 23 |
| 69912-* | VCT.40 p-M8x20-* | 40 | M8 | 27 | 17 | 20 | 12 | 16 | 24 |
| 69913-* | VCT.40 p-M8x25-* | 40 | M8 | 27 | 17 | 25 | 12 | 16 | 26 |
| 69914-* | VCT.40 p-M8x30-* | 40 | M8 | 27 | 17 | 30 | 12 | 16 | 27 |
| 69915-* | VCT.40 p-M8x35-* | 40 | M8 | 27 | 17 | 35 | 12 | 16 | 28 |
| 69916-* | VCT.40 p-M8x40-* | 40 | M8 | 27 | 17 | 40 | 12 | 16 | 30 |
| 69917-* | VCT.40 p-M8x45-* | 40 | M8 | 27 | 17 | 45 | 12 | 16 | 32 |
| 69918-* | VCT.40 p-M8x50-* | 40 | M8 | 27 | 17 | 50 | 12 | 16 | 35 |
| 69919-* | VCT.40 p-M8x55-* | 40 | M8 | 27 | 17 | 55 | 12 | 16 | 36 |
| 69922-* | VCT.40 p-M8x70-* | 40 | M8 | 28 | 17 | 70 | 12 | 16 | 40 |
| 69931-* | VCT.40 p-M10x20-* | 40 | M10 | 27 | 17 | 20 | 12 | 18 | 26 |
| 69933-* | VCT.40 p-M10x25-* | 40 | M10 | 27 | 17 | 25 | 12 | 18 | 28 |
| 69935-* | VCT.40 p-M10x30-* | 40 | M10 | 27 | 17 | 30 | 12 | 18 | 30 |
| 69937-* | VCT.40 p-M10x40-* | 40 | M10 | 27 | 17 | 40 | 12 | 18 | 32 |
| 69939-* | VCT.40 p-M10x50-* | 40 | M10 | 27 | 17 | 50 | 12 | 18 | 34 |

VCT-p

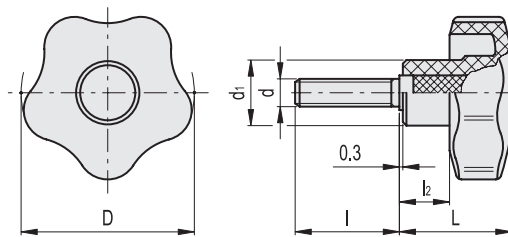
| Kod | Oznaczenie | D | d6g | L | d1 | l | l2 | C# | [Nm] |
|---------|-------------------|----|-----|----|----|----|----|----|------|
| 69960-* | VCT.50 p-M8x16-* | 50 | M8 | 32 | 19 | 16 | 14 | 16 | 26 |
| 69961-* | VCT.50 p-M8x20-* | 50 | M8 | 32 | 19 | 20 | 14 | 16 | 28 |
| 69962-* | VCT.50 p-M8x25-* | 50 | M8 | 32 | 19 | 25 | 14 | 16 | 30 |
| 69963-* | VCT.50 p-M8x30-* | 50 | M8 | 32 | 19 | 30 | 14 | 16 | 31 |
| 69965-* | VCT.50 p-M8x40-* | 50 | M8 | 32 | 19 | 40 | 14 | 16 | 33 |
| 69967-* | VCT.50 p-M8x50-* | 50 | M8 | 32 | 19 | 50 | 14 | 16 | 35 |
| 69970-* | VCT.50 p-M10x16-* | 50 | M10 | 32 | 19 | 16 | 14 | 23 | 34 |
| 69971-* | VCT.50 p-M10x20-* | 50 | M10 | 32 | 19 | 20 | 14 | 23 | 36 |
| 69972-* | VCT.50 p-M10x25-* | 50 | M10 | 32 | 19 | 25 | 14 | 23 | 39 |
| 69973-* | VCT.50 p-M10x30-* | 50 | M10 | 32 | 19 | 30 | 14 | 23 | 41 |
| 69974-* | VCT.50 p-M10x35-* | 50 | M10 | 32 | 19 | 35 | 14 | 23 | 43 |
| 69975-* | VCT.50 p-M10x40-* | 50 | M10 | 32 | 19 | 40 | 14 | 23 | 46 |
| 69976-* | VCT.50 p-M10x45-* | 50 | M10 | 32 | 19 | 45 | 14 | 23 | 48 |
| 69977-* | VCT.50 p-M10x50-* | 50 | M10 | 32 | 19 | 50 | 14 | 23 | 51 |
| 69978-* | VCT.50 p-M10x55-* | 50 | M10 | 32 | 19 | 55 | 14 | 23 | 53 |
| 69979-* | VCT.50 p-M10x60-* | 50 | M10 | 32 | 19 | 60 | 14 | 23 | 55 |
| 69981-* | VCT.50 p-M12x20-* | 50 | M12 | 32 | 19 | 20 | 14 | 25 | 39 |
| 69983-* | VCT.50 p-M12x30-* | 50 | M12 | 32 | 19 | 30 | 14 | 25 | 44 |
| 69985-* | VCT.50 p-M12x40-* | 50 | M12 | 32 | 19 | 40 | 14 | 25 | 49 |
| 69987-* | VCT.50 p-M12x50-* | 50 | M12 | 32 | 19 | 50 | 14 | 25 | 54 |
| 69989-* | VCT.50 p-M12x60-* | 50 | M12 | 32 | 19 | 60 | 14 | 25 | 59 |
| 70021-* | VCT.63 p-M10x20-* | 63 | M10 | 37 | 22 | 20 | 16 | 37 | 54 |
| 70023-* | VCT.63 p-M10x30-* | 63 | M10 | 37 | 22 | 30 | 16 | 37 | 59 |
| 70025-* | VCT.63 p-M10x40-* | 63 | M10 | 37 | 22 | 40 | 16 | 37 | 64 |
| 70027-* | VCT.63 p-M10x50-* | 63 | M10 | 37 | 22 | 50 | 16 | 37 | 69 |
| 70029-* | VCT.63 p-M10x60-* | 63 | M10 | 37 | 22 | 60 | 16 | 37 | 74 |
| 70030-* | VCT.63 p-M12x20-* | 63 | M12 | 37 | 22 | 20 | 16 | 46 | 65 |
| 70031-* | VCT.63 p-M12x25-* | 63 | M12 | 37 | 22 | 25 | 16 | 46 | 67 |
| 70032-* | VCT.63 p-M12x30-* | 63 | M12 | 37 | 22 | 30 | 16 | 46 | 67 |
| 70034-* | VCT.63 p-M12x35-* | 63 | M12 | 37 | 22 | 35 | 16 | 46 | 70 |
| 70033-* | VCT.63 p-M12x40-* | 63 | M12 | 37 | 22 | 40 | 16 | 46 | 73 |
| 70036-* | VCT.63 p-M12x50-* | 63 | M12 | 37 | 22 | 50 | 16 | 46 | 79 |
| 70039-* | VCT.63 p-M12x60-* | 63 | M12 | 37 | 22 | 60 | 16 | 46 | 85 |

"Maks. moment siły dokręcania (C)" oznacza wartość poniżej której metalowa wtopka, w normalnych warunkach użytkowania, jest ściśle połączona z tworzywem. Uwaga: jako maksymalny moment siły dokręcania dłonią przyjmuje się 5-6 Nm.





VCT-p
VCT-SST-p



*

C9
RAL9005

C2
RAL2004

C3
RAL7035

C4
RAL1021

C5
RAL5024

C6
RAL3000

C17
RAL6017

VCT-p

| Kod | Oznaczenie | D | d6g | L | d1 | l | l2 | C# [Nm] | |
|---------|-------------------|----|-----|------|----|----|----|------------|-----|
| 70083.* | VCT.74 p-M12x30.* | 74 | M12 | 43.5 | 26 | 30 | 22 | 68 | 86 |
| 70085.* | VCT.74 p-M12x50.* | 74 | M12 | 43.5 | 26 | 50 | 22 | 68 | 98 |
| 70087.* | VCT.74 p-M12x70.* | 74 | M12 | 43.5 | 26 | 70 | 22 | 68 | 110 |
| 70095.* | VCT.74 p-M14x50.* | 74 | M14 | 43.5 | 26 | 50 | 22 | 78 | 106 |
| 70089.* | VCT.74 p-M16x30.* | 74 | M16 | 43.5 | 26 | 30 | 22 | 80 | 132 |
| 70090.* | VCT.74 p-M16x40.* | 74 | M16 | 43.5 | 26 | 40 | 22 | 80 | 144 |
| 70091.* | VCT.74 p-M16x50.* | 74 | M16 | 43.5 | 26 | 50 | 22 | 80 | 156 |
| 70092.* | VCT.74 p-M16x60.* | 74 | M16 | 43.5 | 26 | 60 | 22 | 80 | 168 |
| 70093.* | VCT.74 p-M16x70.* | 74 | M16 | 43.5 | 26 | 70 | 22 | 80 | 180 |
| 70153.* | VCT.84 p-M12x30.* | 84 | M12 | 44 | 28 | 30 | 21 | 80 | 84 |
| 70155.* | VCT.84 p-M12x50.* | 84 | M12 | 44 | 28 | 50 | 21 | 80 | 99 |
| 70157.* | VCT.84 p-M12x70.* | 84 | M12 | 44 | 28 | 70 | 21 | 80 | 113 |
| 70173.* | VCT.84 p-M16x30.* | 84 | M16 | 44 | 28 | 30 | 21 | 85 | 131 |
| 70175.* | VCT.84 p-M16x40.* | 84 | M16 | 44 | 28 | 40 | 21 | 85 | 141 |
| 70177.* | VCT.84 p-M16x50.* | 84 | M16 | 44 | 28 | 50 | 21 | 85 | 157 |
| 70179.* | VCT.84 p-M16x60.* | 84 | M16 | 44 | 28 | 60 | 21 | 85 | 170 |
| 70181.* | VCT.84 p-M16x70.* | 84 | M16 | 44 | 28 | 70 | 21 | 85 | 185 |
| 70099.* | VCT.95 p-M16x50.* | 95 | M16 | 46 | 32 | 50 | 21 | 138 | 175 |

"Maks. moment siły dokręcania (C)" oznacza wartość poniżej której metalowa wtopka, w normalnych warunkach użytkowania, jest ściśle połączona z tworzywem. Uwaga: jako maksymalny możliwy do uzyskania przez dorosłego człowieka moment siły dokręcania dłonią przyjmuje się 5-6 Nm.

VCT-SST-p

STAINLESS STEEL

| Kod | Oznaczenie | D | d6g | L | d1 | l | l2 | C# [Nm] | |
|----------|-----------------------|----|-----|------|----|----|----|------------|-----|
| 69837-C9 | VCT.25-SST-p-M5x10-C9 | 25 | M5 | 19 | 13 | 10 | 8 | 6 | 8 |
| 69838-C9 | VCT.25-SST-p-M5x16-C9 | 25 | M5 | 19 | 13 | 16 | 8 | 6 | 9 |
| 69839-C9 | VCT.25-SST-p-M5x20-C9 | 25 | M5 | 19 | 13 | 20 | 8 | 6 | 10 |
| 69840-C9 | VCT.25-SST-p-M5x25-C9 | 25 | M5 | 19 | 13 | 25 | 8 | 6 | 11 |
| 69881.* | VCT.32-SST-p-M6x16.* | 32 | M6 | 23 | 15 | 16 | 10 | 8 | 14 |
| 69882.* | VCT.32-SST-p-M6x20.* | 32 | M6 | 23 | 15 | 20 | 10 | 8 | 15 |
| 69883.* | VCT.32-SST-p-M6x25.* | 32 | M6 | 23 | 15 | 25 | 10 | 8 | 16 |
| 69884.* | VCT.32-SST-p-M6x30.* | 32 | M6 | 23 | 15 | 30 | 10 | 8 | 17 |
| 69945.* | VCT.40-SST-p-M8x20.* | 40 | M8 | 27 | 17 | 20 | 12 | 18 | 25 |
| 69946.* | VCT.40-SST-p-M8x25.* | 40 | M8 | 27 | 17 | 25 | 12 | 18 | 27 |
| 69947.* | VCT.40-SST-p-M8x30.* | 40 | M8 | 27 | 17 | 30 | 12 | 18 | 28 |
| 69948.* | VCT.40-SST-p-M8x40.* | 40 | M8 | 27 | 17 | 40 | 12 | 18 | 31 |
| 69995.* | VCT.50-SST-p-M10x20.* | 50 | M10 | 32 | 19 | 20 | 14 | 25 | 37 |
| 69996.* | VCT.50-SST-p-M10x25.* | 50 | M10 | 32 | 19 | 25 | 14 | 25 | 40 |
| 69997.* | VCT.50-SST-p-M10x30.* | 50 | M10 | 32 | 19 | 30 | 14 | 25 | 42 |
| 70000.* | VCT.50-SST-p-M10x40.* | 50 | M10 | 32 | 19 | 40 | 14 | 25 | 45 |
| 69998.* | VCT.50-SST-p-M10x45.* | 50 | M10 | 32 | 19 | 45 | 14 | 25 | 49 |
| 69999.* | VCT.50-SST-p-M10x55.* | 50 | M10 | 32 | 19 | 55 | 14 | 25 | 54 |
| 70042.* | VCT.63-SST-p-M12x30.* | 63 | M12 | 37 | 22 | 30 | 16 | 46 | 68 |
| 70043.* | VCT.63-SST-p-M12x40.* | 63 | M12 | 37 | 22 | 40 | 16 | 46 | 74 |
| 70046.* | VCT.63-SST-p-M12x50.* | 63 | M12 | 37 | 22 | 50 | 16 | 46 | 80 |
| 70073.* | VCT.74-SST-p-M12x30.* | 74 | M12 | 43.5 | 26 | 30 | 22 | 68 | 87 |
| 70075.* | VCT.74-SST-p-M12x50.* | 74 | M12 | 43.5 | 26 | 50 | 22 | 68 | 100 |
| 70191.* | VCT.84-SST-p-M16x30.* | 84 | M16 | 44 | 28 | 30 | 21 | 85 | 132 |
| 70194.* | VCT.84-SST-p-M16x50.* | 84 | M16 | 44 | 28 | 50 | 21 | 85 | 159 |
| 70197.* | VCT.84-SST-p-M16x70.* | 84 | M16 | 44 | 28 | 70 | 21 | 85 | 186 |

"Maks. moment siły dokręcania (C)" oznacza wartość poniżej której metalowa wtopka, w normalnych warunkach użytkowania, jest ściśle połączona z tworzywem. Uwaga: jako maksymalny możliwy do uzyskania przez dorosłego człowieka moment siły dokręcania dłonią przyjmuje się 5-6 Nm.