

FEATURES

- The diaphragm pulse valves are especially designed for dust collector service applications, combining high flow, long life and extremely fast opening and closing to produce reliable and economical operation
- The high flow, angle type bodies, springless construction, in combination with the special diaphragm assemblies give the unique operating features required for dust collector service applications
- Integral compression fittings for fast, easy, secure installation
- Built-in silencers guarantee noise free operation and avoid foreign particles entering the valve
- The integral operators are provided with epoxy moulded F-class coils. Various optional waterproof and explosionproof solenoids for use in potentially explosive atmospheres (gas & dust) according to Directive ATEX 94/9/EC can be mounted on the same basic valve (see pages 49 to 57)
- The components satisfy all relevant EC directives



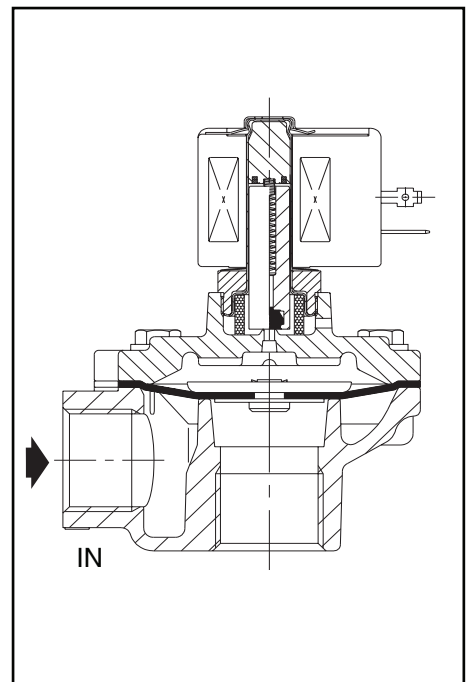
GENERAL

Differential pressure (PS) 0,35 - 8,5 bar [1 bar = 100kPa]
Ambient temperature range -20 to +85°C

fluid	temperature range (TS)	piston/diaphragm
air	-20 to +85 °C	TPE (thermoplastic polyester elastomer)

CONSTRUCTION

Body	Aluminium
Core tube	Stainless steel
Core and plugnut	Stainless steel
Core spring	Stainless steel
Sealings & disc	NBR (nitrile)
Diaphragm	TPE (thermoplastic polyester elastomer)
Shading coil	Copper
Coil insulation class	F
Connector	Spade plug (cable Ø 6 - 10 mm)
Connector specification	ISO 4400
Electrical safety	IEC 335



ELECTRICAL CHARACTERISTICS

Standard voltages DC (=) : 24V
 (Other voltages and 60 Hz on request) AC (~) : 24V - 115V - 230V / 50 Hz

coil type	nominal power ratings				ambient temperature range (°C)	protection
	inrush ~ (VA)	holding ~ (VA) (W)		hot/cold = (W)		
		(VA)	(W)			
CM6-FT CM6-FI (1)	34 -	15,6 -	6 -	-	-20 to +85	moulded IP65

SPECIFICATIONS

pipe size	orifice size (mm)	flow coefficient Kv (m³/h) (l/min)		operating pressure differential (bar)		coil type ~ = (1)		catalogue number standard ATEX dust II3D		option FPM
				min.	max. (PS)					
(G) - Threaded pipe connection										
3/4	24	14	233	0,35	8,5	CM6-FT	CM6-FI	SC G353A043	SCDU G353A043	V
1	27	17	283	0,35	8,5	CM6-FT	CM6-FI	SC G353A044	SCDU G353A044	V
Ø - Compression fitting pipe connection										
3/4	24	14	233	0,35	8,5	CM6-FT	CM6-FI	SC G353-052	SCDU G353-052	V
1	27	17	283	0,35	8,5	CM6-FT	CM6-FI	SC G353-053	SCDU G353-053	V

(1) Intermittent duty, Relative Duty Time is 10%. Max. on time is 1 min.

OPTIONS

- Waterproof enclosure with embedded screw terminal coil according to protection class IP67, CEE 10
- Explosionproof solenoids for hazardous locations according to "ATEX" and national standards
- Explosionproof and watertight solenoids according to "NEMA" standards
- Compliance with "UL" standards
- Plug with visual indication and/or peak voltage suppression
- Electronic timer
- Valves can also be supplied with FPM (fluorelastomer / viton) diaphragm and seal materials. Use the appropriate optional suffix letter for identification

INSTALLATION

- The valves can be mounted in any position without affecting operation
- Pipe connection identifier is: G = G (ISO 228/1) or compression fitting
- For compression fitting types tightness is achieved by the compressed gasket on the blow tube
- The use of the rubber gaskets as sealing members will allow a slight misalignment in piping when using compression fittings
- Other pipe threads are available on request
- Installation/maintenance instructions are included with each valve
- Spare parts kit and replacement coils are available

DIMENSIONS (mm), WEIGHT (kg)

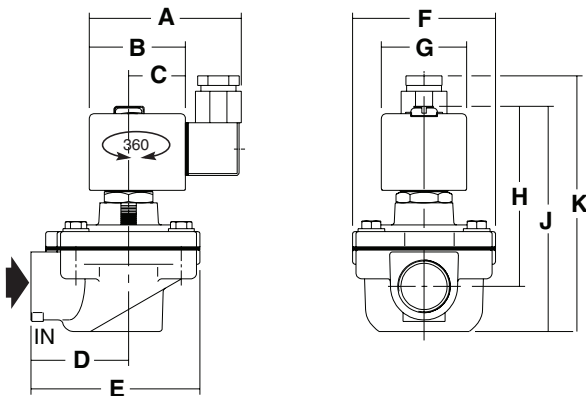


Fig. 1 threaded type

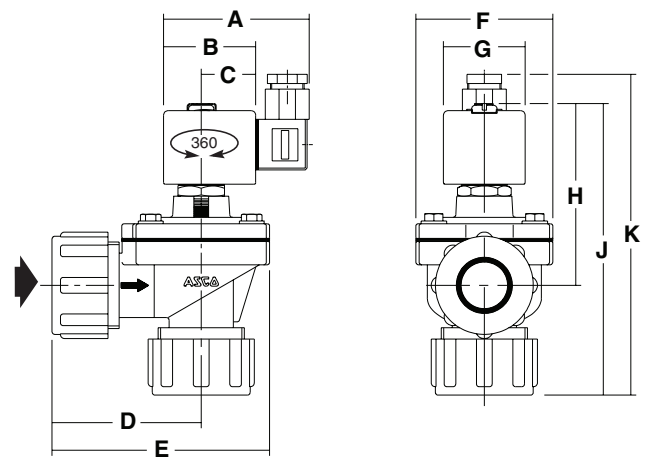


Fig. 2 compression fitting type

catalogue number	A	B	C	D	E	F	G	H	J	K	weight (1)	(C)
SC(DU) G353A043	75	45	27	51	89	75	39	92	113	130	0,70	Fig.1
SC(DU) G353A044	75	45	27	51	89	75	39	92	113	130	0,65	Fig.1
SC(DU) G353-052	75	45	27	88	125	75	39	92	175	195	0,85	Fig.2
SC(DU) G353-053	75	45	27	88	125	75	39	92	175	195	0,90	Fig.2

(1) incl. coil and connector

(C) construction type