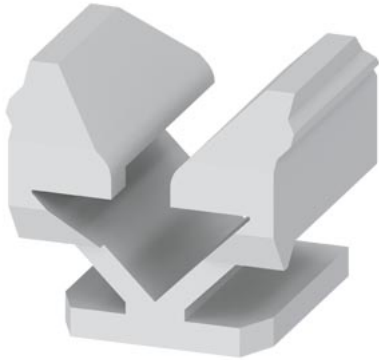







ALPHA DIN przedłużenia wsporników, 7,5 mm duże opakowanie: 100 szt. do nasadzania na wsporniki



| Wersja | |
|---|---|
| Nazwa markowa produktu | ALPHA |
| materiał | tworzywo sztuczne |
| Konstrukcja mechaniczna | |
| długość | 7,5 mm |
| Waga netto na jedn. | 1 g |
| Zezwolenia Certyfikaty | |
| Environment | General Product Approval |
| Environmental Conformations | Environmental Conformations |
|  |  |
| | Confirmation |
| |  |
| General Product Approval | |
| Test Certificates | other |
|  | Special Test Certificate |
| | Confirmation |
| | Miscellaneous |
| |  |

Więcej informacji

Informacje dotyczące opakowania

[Informacje dotyczące opakowania](#)

Information for data generation and storage

<https://support.industry.siemens.com/cs/ww/en/view/109995012>

Information- and Downloadcenter (Catalogs, Brochures,...)

<https://www.siemens.com/lowvoltage/catalogs>

Industry Mall (Online ordering system)

<https://mall.industry.siemens.com/mall/en/en/Catalog/product?mlfb=8GK9911-0KK03>

Service&Support (Manuals, Certificates, Characteristics, FAQs,...)

<https://support.industry.siemens.com/cs/ww/pl/ps/8GK9911-0KK03>

Image database (product images, 2D dimension drawings, 3D models, device circuit diagrams, ...)

https://www.automation.siemens.com/bilddb/cax_en.aspx?mlfb=8GK9911-0KK03

CAX-Online-Generator

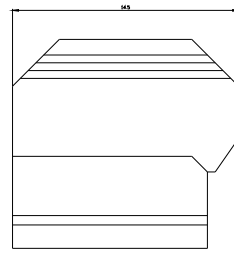
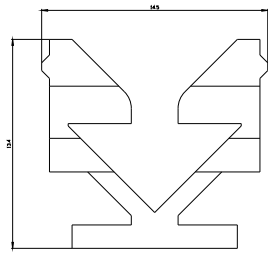
<https://www.siemens.com/cax>

Tender specifications

<https://www.siemens.com/specifications>

Krzywe charakterystyczne

[https://curves.simaris.siemens.com/curves/<mmp_prod_noCOMP="HAUPT"></mmp_prod_no>](https://curves.simaris.siemens.com/curves/<mmp_prod_noCOMP=)



Ostatnia zmiana:

9.05.2026 

